

# Floor Plans

GOLDENEAGLELOGHOMES.com

Golden Eagle  
LOG HOMES.com

Your resource for the most complete log-home packages

Customize  
your dream home

75+  
options

Affordable  
homes of all sizes

6 luxurious  
home tours

Introducing 8 NEW  
hybrid designs



# Celebrating Over 40 years of excellence



*Golden Eagle Log Homes* is a family business that grew from a successful building supply company.

In 1966, Wally and Marlace Parmeter founded the *Golden Eagle Building Center* in Wisconsin Rapids, Wisconsin. With the knowledge gained from building conventional framed homes and an in-depth understanding of the building products industry, the Parmeters decided to pursue their dream of building a log home in which to raise their family.

Trees were individually selected from their own property and then carefully cut into logs and allowed to dry completely for one full year. Construction then began on the first *Golden Eagle* log home — an event that did not go unnoticed by onlookers.

No sooner had the Parmeters moved in than they were approached by others who were impressed by the quality craftsmanship and materials used in the home. This led to a small side business which began providing several custom log home packages a year to an appreciative clientele.

In 1986, Wally and Marlace decided to pursue their love of log construction by officially incorporating *Golden Eagle Log Homes*. Their sons — Jay and Tod — embarked on a busy time of assembling the necessary land, building the necessary shop space and purchasing and installing the required machinery.

During the day, the boys ran the thriving building center. In the evening, they manufactured log homes. In those days, company “board” meetings consisted of sitting at the family picnic table under a clear Wisconsin sky, discussing innovative log construction techniques.

The dedication of the boys was so strong that sales from their “night job” soon surpassed those of the building center.

## Second Generation of Craftsmen

Wally and Marlace retired in 1997, but not before making sure the business was left in capable hands. Today, *Golden Eagle* is owned by Jay and Tod.

*Golden Eagle* produces more than 130 log homes each year.

Every one is delivered with care, produced with attention to detail, and accompanied to the site with unprecedented customer service. *Golden Eagle's* success comes from a dedicated group of people devoted to the time-honored tradition of quality workmanship and pride in the finished product.

“Our primary business is to design, manufacture, and sell energy-efficient, affordable log and custom hybrid homes,” says Tod Parmeter. “We are one of a few companies that offer both full log and half log homes. We have a large variety of log styles and sizes. Logs are available in 8", 10" and 12" stack heights and with different corner options such as butt and pass, vertical post, dovetail and saddle notch. If you're not 100% sure you want a log home, be sure and check out our custom natural texture or hybrid timber frame home options.”

The expansive showroom and design center gives customers many choices in cabinetry, lighting, plumbing fixtures, fireplaces, doors, and stonework. “Our vast array of displays makes selecting choices easy,” Jay says. “We didn't coin the phrase, ‘one-stop shopping,’ but it certainly fits the process at *Golden Eagle*. We not only understand the process of planning and building log homes, we also understand the customers’ needs during this time.”

*Golden Eagle's* custom design service can be used to change any of the company's standard floor plans, or the design team can work with a customer's dream from scratch to make sure a personal touch is reflected in the finished product.

“We want to ensure that your home will be a source of pleasure and pride for many years to come,” Tod says. “Our prices are very competitive and our quality and customer service are excellent. The buying power we hold and our expertise in the building industry help to keep our prices affordable. Many of our customers have said that they were about to give up on their dream of building a log home until they compared our pricing to other log home companies.”

4421 Plover Road, Wisconsin Rapids, WI 54494 • 800-270-5025; 715-421-3392; Fax: 715-421-2002  
E-mail: [goldnegl@wctc.net](mailto:goldnegl@wctc.net) • Web site: [www.goldeneagleloghomes.com](http://www.goldeneagleloghomes.com)  
Over 1,000 plans on our web site





# CONTENTS

## FEATURES, TOURS & PLANS

- 4** Choose your style  
Customize the look of your log home!  
Compare corner styles and log types.
- 10** Lakehouse tour  
Introduced in 2008, the Lakehouse design features three levels and space for guests.
- 20** Country's Best tour  
See our popular model with a media room.
- 30** Eagle Prow V tour  
Put the focus on your great room with several innovative ideas.
- 40** Northern Eagle tour  
Perfect for a retreat or a primary home.
- 46** Double Eagle II tour  
With a plan based on our headquarters, this design has it all.
- 56** Shenandoah II tour  
Step inside our classic model with a contemporary look.

## FLOOR PLAN INDEX

Adventurer.....62	Fingerlakes.....79	North Carolina.....98	Waterfront.....116
American Eagle.....63	Gatlinburg.....80	Northern Eagle 2.....40	Waterside.....117
Aspen Valley.....64	Heritage.....81	Oak Ridge 2.....99	Waterview.....118
Big Timber.....65	Hiawatha 2.....82	Pine View 2.....100	Western.....119
Black Hills.....66	Hiawatha 2.....82	Pinnacle 2.....101	White Mountain.....120
Boundary Waters.....67	Hidden Bay.....83	Pocono.....102	Wild River.....121
Brookside.....68	Home Office.....84	Ponderosa.....103	Wintergreen 2.....122
Clearwater.....69	Hot Spring.....85	Prow View.....104	Wisconsin 2.....123
Colorado 2.....70	Island View.....86	River View 2.....105	Wisconsin Rapids 2...124
Copper Mountain.....71	Kodiak.....87	Rocky Mountain.....106	Yellowstone.....125
Country's Best.....20	Lakehouse.....10	Rustic Retreat.....107	Business Designs.....126
Countryside 2.....72	Lake Place.....88	Savannah.....108	
Double Eagle Deluxe....46	Lakeview 2.....89	Sawtooth Mountain...109	
Eagle 2 Deluxe.....73	Lodge 2.....90	Shenandoah.....56	
Eagle Island.....74	Log Cabin 2.....91	Smokey Mountain.....110	
Eagle Point 2.....75	Log Ranch.....92	Springfield.....111	
Eagle Prow 4.....76	Maggie Valley.....93	Tennessee.....112	
Eagle Prow 5.....30	Minnesota 2.....94	Timberwolf.....113	
Empty Nester.....77	Montana.....95	Tomahawk.....114	
Expedition 2.....78	Mount Rushmore.....96	Up North.....115	
	New England.....97		



**COPYRIGHT** All plans in this catalog are protected under copyright laws by Golden Eagle Log Homes, Inc. Reproduction of any part of this catalog is strictly prohibited without the written consent from Golden Eagle Log Homes. The renderings, photos and or floor plans in tis catalog may vary from the actual final engineered set of plans.

The Golden Eagle Log Homes 2008-09 Guide is produced by the editors of Country's Best Log Homes® as a special supplement. The regular issues of Country's Best Log Homes® (ISSN 1089-3466) are published bimonthly by F+W Publications, Inc., 700 E. State St., Iola, WI 54990 (715) 445-2214. Periodicals Rate postage paid, at Iola, WI, and at additional mailing offices. Copy-rights to stories and illustrations are the property of their creators. The contents of this publication may not be reproduced in whole or in part without consent of the copyright owner. For more information about Country's Best Log Homes, see [www.LogHomesNetwork.com](http://www.LogHomesNetwork.com).



# Custom, Natural Textures, Hybrid Timber Frame Homes

After looking at full-log and half-log, are you still not seeing your dream home?

That's why *Golden Eagle Log Homes* offers customizable "hybrid" homes that can provide exactly what you want in a high-quality and still-affordable way.

Hybrids are designed for people who may want logs to be part of their dream home, but they want to mix in a variety of other looks: Timbers, stone, painted drywall and more.

If you can picture it, a *Golden Eagle* designer can turn it into your new home. Personalize your dream home by talking to *Golden Eagle* and giving us the chance to design a custom hybrid, or turn one of the company's other floor plans into a hybrid.

You can see just a sampling of the options available in the floor plans section.

See the  
**NEW**  
**HYBRID**  
floor plans on  
Pages 64, 70, 71, 80,  
93, 95, 98, 125



"My husband wanted a log home, I wasn't sure. When we saw *Golden Eagle's* Hybrid Timber we both loved it and knew it was for us."

*Sandy B. Denver Co.*





# KILN DRIED Solid Log & Full Log

If you have always wanted to buy a full log home but were worried about settling, energy efficiency, how to run the electrical wires, and plumbing, you can feel confident in buying a Golden Eagle full log home. *Golden Eagle* uses only kiln dried logs. We have a huge dry inventory (most companies can't afford to do this).

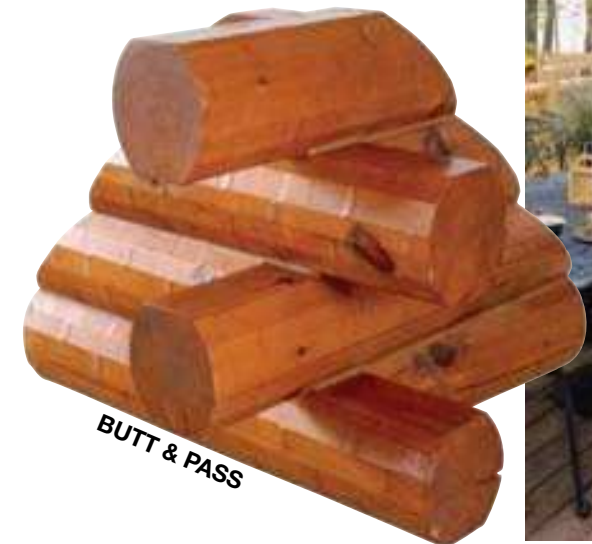
*Golden Eagle's* full log walls have a high thermal mass property, meaning it absorbs energy and releases it. The approximate heating and cooling costs will be about the same as an R-19 wall. *Golden Eagle* uses Log caulk and compression seal on all joints; wood splines are used to strengthen and seal all butt joints.

Even on a full log home, *Golden Eagle's* walls on the second floor, gable ends, dormers and walkouts are insulated 2"x 6" construction with half logs. This makes for a sensible full log home. Garage walls are also half log, except over 2" x 4" walls.

As for running the wiring and plumbing, it's easy, *Golden Eagle* can show you how. Please note that all the interior partition walls are 2" x 4" (except plumbing or structural walls) so they can be conventionally wired and plumbed. If you have any more questions about *Golden Eagle* full log construction, contact us and a staff member will help lead you to the right home for you.



DOVETAIL



BUTT & PASS



## The style & look of FULL LOG

- Your choice of Dovetail, Butt&Pass, or Saddle Notch corners.
- Your choice of Smooth or Rustic Peeled finish.
- Your choice of 8", 10", or 12" tall logs.
- Your choice of 6", 8", 10" wide logs. \* 6" wide logs are not to be used in colder climates.
- All logs are kiln dried and then heat treated to kill bugs and larvae. Then third party inspected. And yes, we have precut corners.
- We offer wall logs up to 16' long (your benefit less seams).

We provide an outstanding weathertight trim and flashing system for our exterior doors and windows. This keeps the bugs and water out. *We don't know of any other company that does this!*



SADDLE NOTCH



# KILN DRIED

## Long Lengths, Half Log, Insulated Log, Quarter Log

### Insulated Half Logs

Golden Eagle's half log homes are conventionally framed, insulated 2" x 6" exterior walls with one of our half-log styles attached to the exterior. Golden Eagle's corners are cut out of a solid log so you can't tell it from a full log. Absolutely positively nobody can question the settling issue, the energy issue, the running of the electrical or plumbing because it's an energy efficient 2" x 6" home.

Vertical corners are also available.



Check the competition. WE OFFER HALF LOGS UP TO 16' LONG AT NO EXTRA CHARGE!

## HALF LOG samples



BUTT & PASS



SADDLE NOTCH



DOVETAIL

The 1/2 Log system comes with precut corner sets and the fasteners are concealed.

## TRAINING CENTER



See our website for mini videos showing building techniques & Tips

Golden Eagle hopes to train 400 builders a year

Golden Eagle Log Homes has opened a new builder-training facilities at the company headquarters in Wisconsin Rapids, Wis. "We've been training about 200 builders per year," said company co-owner Tod Parmeter. "With this new training center we can double that, so our goal is to host at least 400 builders through our program this year."

Golden Eagle's new training facility is 2,060 square feet, allowing the entire building to serve as a demonstration model where seminar participants can observe exterior construction details regardless of the weather. Parmeter said the classroom features "a lot of permanent built-in displays that show not only what we've been doing, but it also details a lot of new ideas and directions that we're exploring in our product line."

The day-long seminars are offered once a month under the expertise of instructor Bob Strosin, a 35-year veteran builder with literally hundreds of homes under his belt. The Golden Eagle Builder Seminar is offered free to builders.

Potential home buyers often send their builders to the class. It's not unusual for a foreman to go through the class and then send his crew members through one or two at a time. "Builders who come here will go over every detail of construction with us before they build," Parmeter said. "They always say it was worth it."



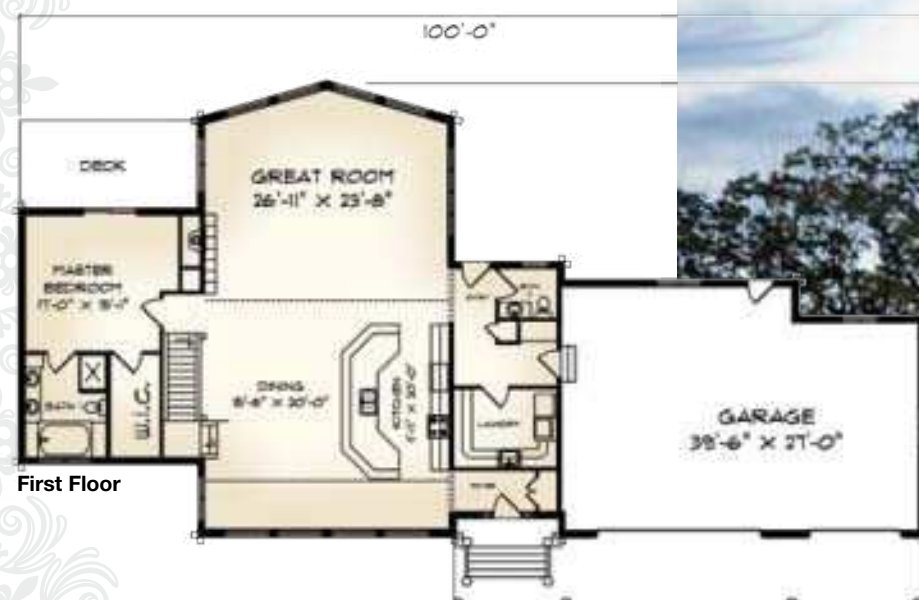
For more information on upcoming builder training dates, contact Lynn Wiggins at Golden Eagle Log Homes at (800) 270-5025.



# The Lakehouse Series

## Exterior

The Golden Eagle Lakehouse features a 28-foot window wall at both the front and rear of the home to take in the views from any level of the home. French doors lead to the patio, fire pit, and dock. Driveway side of home (lower right).



First Floor



Loft

## LAKEHOUSE

BEDROOMS.....	2	FIRST FLOOR .....	2,296 SQ. FT.
BATHROOMS.....	3	LOFT.....	1,056 SQ. FT.
		TOTAL SQ. FT.....	3,352

LOWER LEVEL has another 2,2996 SQ. FT. to finish.







## Main Level

The main level of the Golden Eagle Lakehouse is the primary gathering spot for the entire extended family.

The deck was purposely placed to the side of the home so the view from the great room (right) wouldn't be affected.

The fireplace features fire-wood storage and a lighted display shelf. The raised hearth allows for better viewing of the fire, provides comfortable seating, and makes loading wood easier on your back.

A unique kitchen layout (top right) allows for multiple cooks and easy food preparation. The island has a three-foot-deep lower counter and a wide upper counter that serves twelve. Plenty of storage is offered in the knotty hickory cabinets.



First Floor



Loft

## LAKEHOUSE NORTH

BEDROOMS.....	4	FIRST FLOOR .....	3,025 SQ. FT.
BATHROOMS.....	5	LOFT.....	2,989 SQ. FT.
		TOTAL SQ. FT. ....	6,014



## Window Wall

The Lakehouse takes the concept of a window wall to an entirely new level. Windows strategically set both on the front and the back of the home allow guests to enjoy any number of views from almost anywhere.







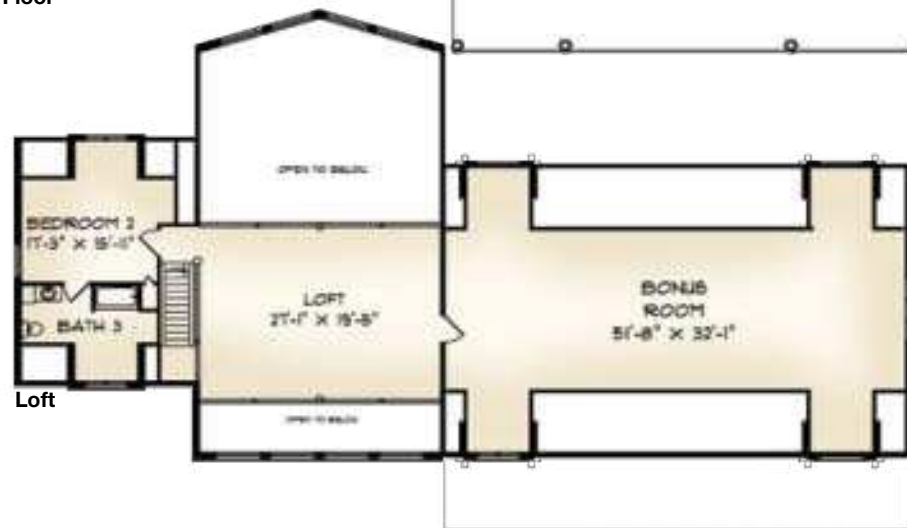
### Loft Level

The loft level features a master suite and a open loft area ideal for games or for quiet conversation. The loft itself is directly above the kitchen and opens to the great room on one side (far left) and to the dining area on the other. Visitors get a spectacular view from either the front or rear windows.

This home features two master bedrooms. The master bedroom (left) is tastefully accented in rustic decor and features embossed, painted drywall on one side.



First Floor



Loft

See more  
photos at  
[www.goldeneagleloghomes.com](http://www.goldeneagleloghomes.com)

<b>LAKEHOUSE EAST</b>	
BEDROOMS.....	2
BATHROOMS.....	3
FIRST FLOOR.....	2,276 SQ. FT.
LOFT .....	1,518 SQ. FT.
<b>TOTAL SQ. FT.....</b>	<b>3,794</b>



### Main Level Leading to Loft

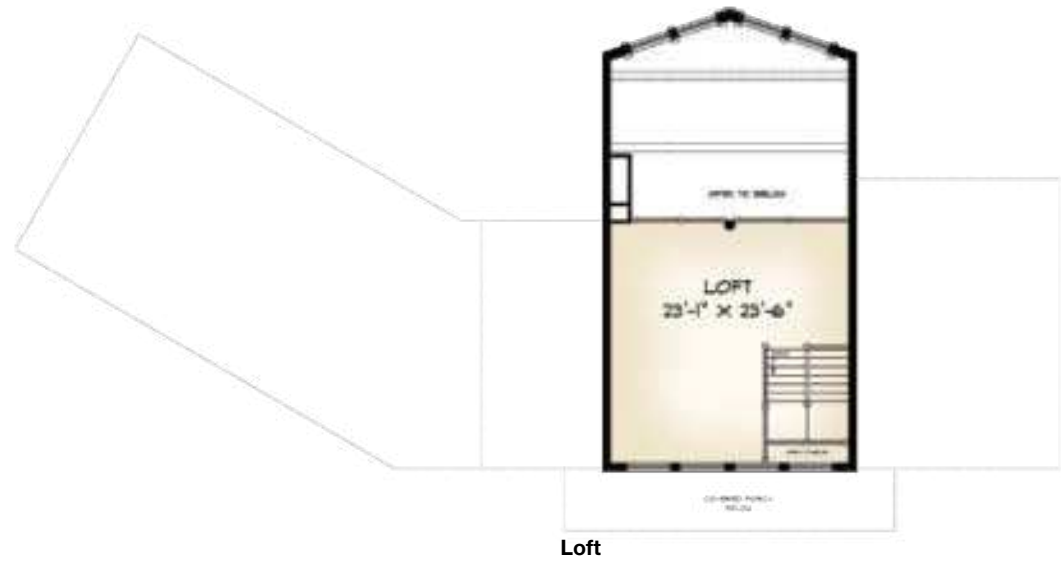
The stairway leading to the loft level is tucked behind the dining room table and directly across from the kitchen island.







**Lower Level**  
The basement level is the hangout for the younger generation. It's outfitted with its own kitchenette (with refrigerator, microwave, pizza oven, and sink), three guest bedrooms, ample space for sleeping bags, and tons of storage. This home features an indoor hot tub.



**LAKEHOUSE SOUTH**

BEDROOMS.....	1	FIRST FLOOR .....	2,058 SQ. FT.
BATHROOMS.....	2	LOFT.....	576 SQ. FT.
		TOTAL SQ. FT. ....	2,634





# The Country's Best Series

## Exterior

Even with the great expectations born of the original Country's Best plans, the planning team at *Golden Eagle Log Homes*, the contractors, the interior designers, and the suppliers were thrilled that the final result exceeded their hopes.



### COUNTRY'S BEST

BEDROOMS.....	2	FIRST FLOOR .....	2,296 SQ. FT.
BATHROOMS.....	3	LOFT .....	1,056 SQ. FT.
		TOTAL SQ. FT. ....	3,352





One of the reasons *Golden Eagle* is so successful is **we care about you and your dream home**



**Main Level**  
A Golden Eagle hand carved post (above left) positioned between the foyer and the great room is not only charming, it functions as a support post for the loft. The hand-carved beams in the great room (far left) add plenty of warmth.







Major league baseball All-Star pitcher Ben Sheets is thrilled with his custom carved Golden Eagle mantel.

Main Level

Adjoining the great room are the kitchen on one side and the den on the other. An octagonal breakfast nook just off the kitchen (far right) is positioned above the media room "snack bar." A laundry area, two bathrooms, and four bedrooms (any of which can be converted to an office, hobby room, or storage) are located on a wing off the kitchen.



First Floor



Loft

COUNTRY'S BEST LOUISIANA

BEDROOMS.....	6	FIRST FLOOR .....	3,469 SQ. FT.
BATHROOMS.....	5	LOFT.....	1,426 SQ. FT.
		TOTAL SQ. FT. ....	4,895





### Loft Level

The second floor opens to a large loft right at the top of the stairs, flanked by two charming master suites. Knotty pine adds considerable appeal and character. Details include painted and embossed drywall in one of the bedrooms (below), comfortable sitting areas, in the loft's gathering area (above), and walk-out balconies for each guest suite.



### Lower Level

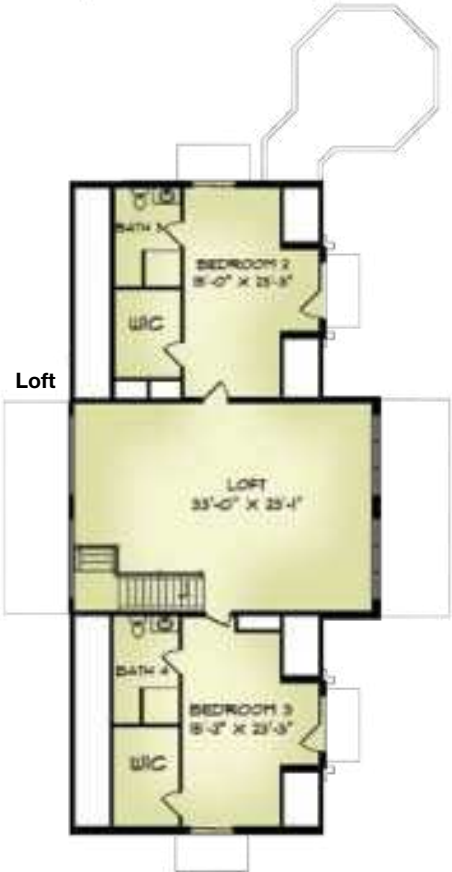
The recreation room on the lower level of the home (bottom) continues the theme of warm, natural colors, highlighted by the stone wainscoting underneath the log courses (below). The lower level also features a wine storage area with room for tasting parties (left).





MEDIA ROOM

The media room features six La-Z-Boy Matinee recliners with armrests and drink holders, perfect for a comfortable experience while watching movies on the flat-screen television. The room is outfitted with SurroundSound. Guests can get popcorn, candy, and drinks at the adjacent cinema-styled snack bar (bottom).



COUNTRY'S BEST ROCKY	
BEDROOMS.....	3
BATHROOMS.....	4
FIRST FLOOR .....2,627 SQ. FT.	
LOFT .....1,446 SQ. FT.	
TOTAL SQ. FT. ....4,073	



# Eagle Prow V Series



<b>EAGLE PROW V</b>	
BEDROOMS.....	2
BATHROOMS.....	2
FIRST FLOOR.....	1,496 SQ. FT.
LOFT .....	448 SQ. FT.
<b>TOTAL SQ. FT.....</b>	<b>1,944</b>



## Exterior

Outstanding features of this Eagle Prow 5 include the popular attached L-shaped garage, varied rooflines, and a unique butt-and-pass corner style on the prow itself (right).







### Main Level

The primary living area in the Eagle Prow 5 plan is on the first floor — ideal for vacationers or retirees. The great room neatly separates the master suite from the guest bedroom. (The master suite — below opposite — can also include an optional fireplace.) The kitchen connects to the laundry room, and a gable porch entry opens immediately to the great room and stairs leading to the loft.



### Loft Level

The multi-use loft can serve a number of functions. This client converted the loft to a third bedroom for guests. Other clients have used the loft as a reading room, office, game room (there's plenty of space for a billiards table), and media room.

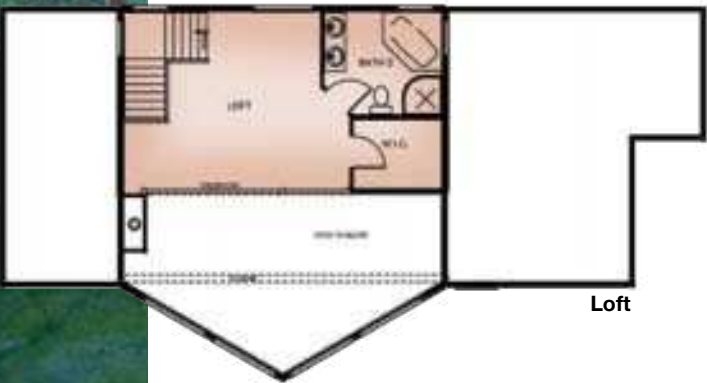






Exterior

Any number of structural combinations will work with the Eagle Prow 5. This owner went with a side-by-side vertical logs to serve as the anchor. Additional handcrafted logs break up the window wall and add structural integrity.



EAGLE PROW V—MIDWEST

BEDROOMS.....	1
BATHROOMS.....	2
FIRST FLOOR .....	1,467 SQ. FT.
LOFT .....	448 SQ. FT.
TOTAL SQ. FT.....	1,915



Main Level

In this design, the great room opens directly to the kitchen and dining area (right) for a new take on a classic log-home design. The main level also features a master bedroom with access to the rear deck and plenty of windows.





Loft Level  
Golden Eagle has sold more than 100 homes based on the Eagle Prow 5 design. No two are the same.



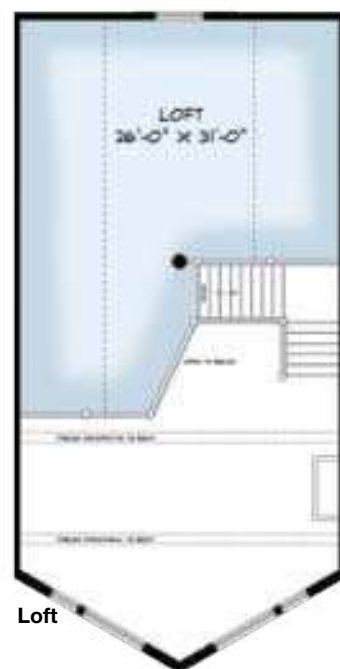
Lower Level  
The optional walkout basement features plush carpeting, a gas fireplace, and wood accents and trim.



# Northern Eagle II

## Exterior

The Northern Eagle 2 combines a variety of new and traditional log-home construction styles, including a covered front porch, butt-and-pass corners, a corner post on the prow, and a roof with a steep enough pitch to allow for comfortable space in the loft.



## NORTHERN EAGLE II

BEDROOMS.....1  
 BATHROOMS.....2

FIRST FLOOR .....1,245 SQ. FT.  
 LOFT.....758 SQ. FT.  
 TOTAL SQ. FT.....2,003





### Main Level

Like other *Golden Eagle* plans, the Northern Eagle 2 allows for plenty of floor plan flexibility. In this model, extra space near the garage has been converted to a laundry area (bottom left); the active family that uses this vacation home has two young children. The master suite includes a spacious walk-in closet (top left). The kitchen is compact, cozy, and functional (below).





**Loft Level**  
The loft on the Northern Eagle 2 plan extends over almost the entire main floor. Expansive ceilings allowed this family to use the area as an office space and billiards center.



**Lower Level**  
The lower level features traditional drop-down ceilings and structural posts. Half-log construction still adds the log-home touch.



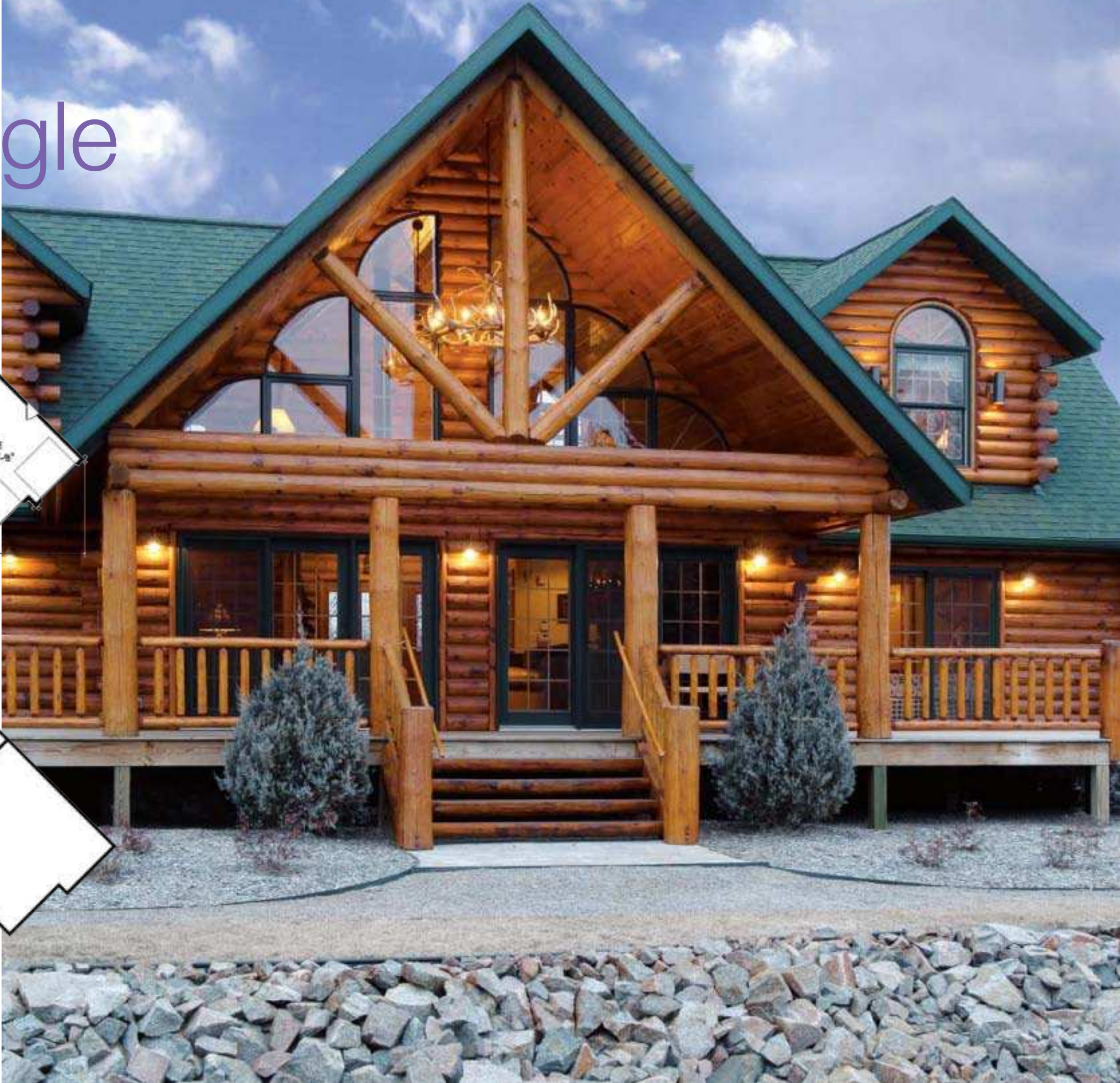
**Garage**  
Every floor plan has the opportunity for customization. This active family decided to expand garage space and add heated floors to store all their toys and gear.





# Double Eagle

Series



DOUBLE EAGLE	
BEDROOMS.....	3
BATHROOMS.....	3
FIRST FLOOR .....1,774 SQ. FT.	
LOFT.....885 SQ. FT.	
TOTAL SQ. FT. ....2,659	





### Main Level

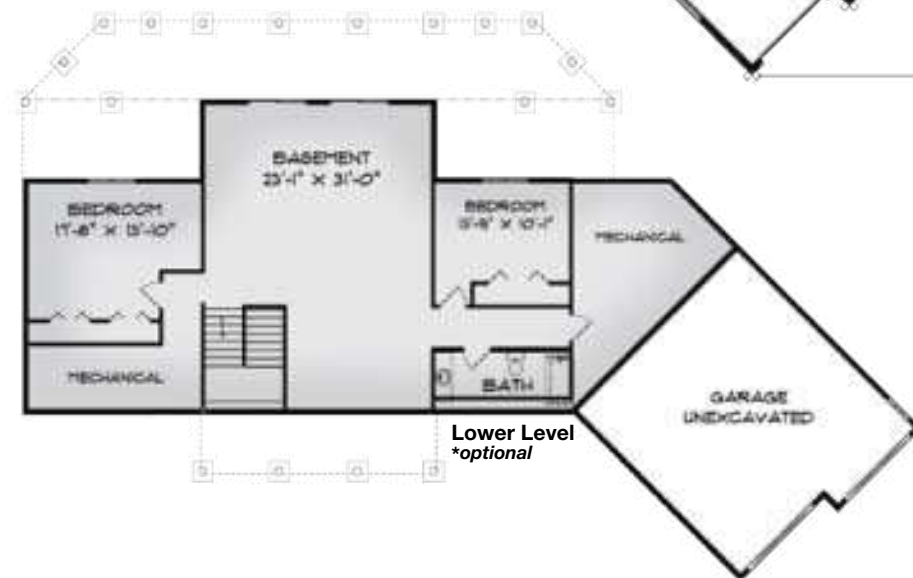
The Double Eagle design merges the concept of a standard ranch home with the friendly ambience of a log cabin. The design includes plenty of open space in all the public areas, a rustic log stairway, visible butt-and-pass corners, and a low-maintenance window wall.







**Kitchen**  
We really like the kitchen in the Double Eagle. Look closely at the floor plan and you will see it has some great angles to it.



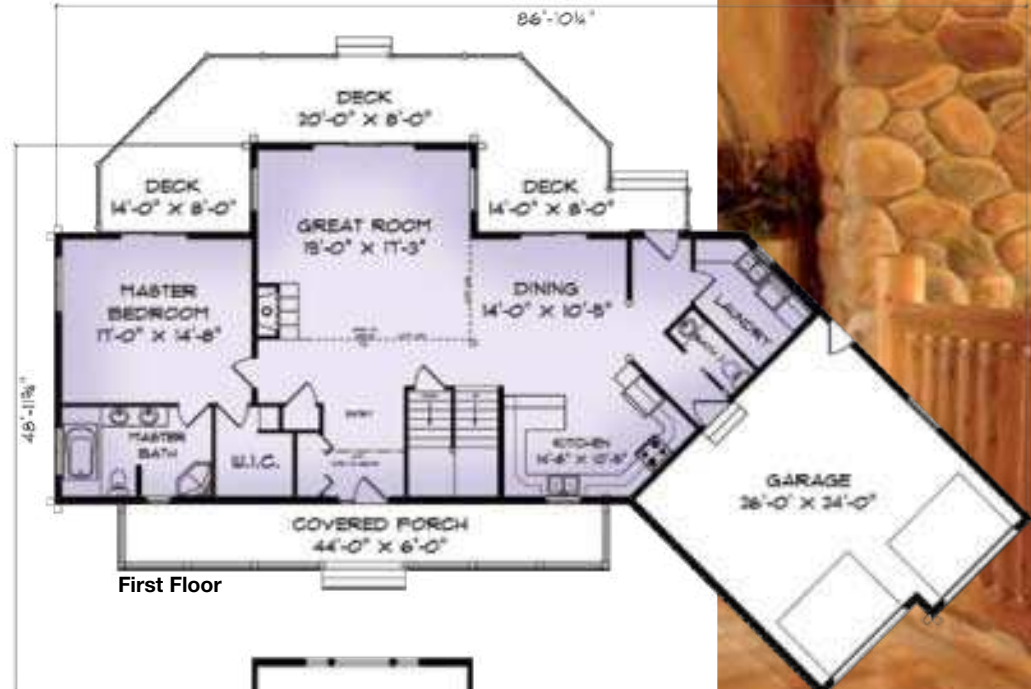
**DOUBLE EAGLE  
DELUXE RANCH**  
BEDROOMS.....1  
BATHROOMS.....2  
FIRST FLOOR.....1,774 SQ. FT.  
TOTAL SQ. FT.....1,774

\* LOWER LEVEL (optional)  
.....1,774 SQ. FT.



Loft Level

In the Double Eagle 2 design, the loft area overlooks the great room and receives ambient light from the window wall. At the top of the stairs is a balcony with a quiet sitting area that leads to guest bedrooms (or offices) on either "wing."



DOUBLE EAGLE II

BEDROOMS.....	3	FIRST FLOOR .....	1,635 SQ. FT.
BATHROOMS.....	3	LOFT.....	839 SQ. FT.
		TOTAL SQ. FT. ....	2,474







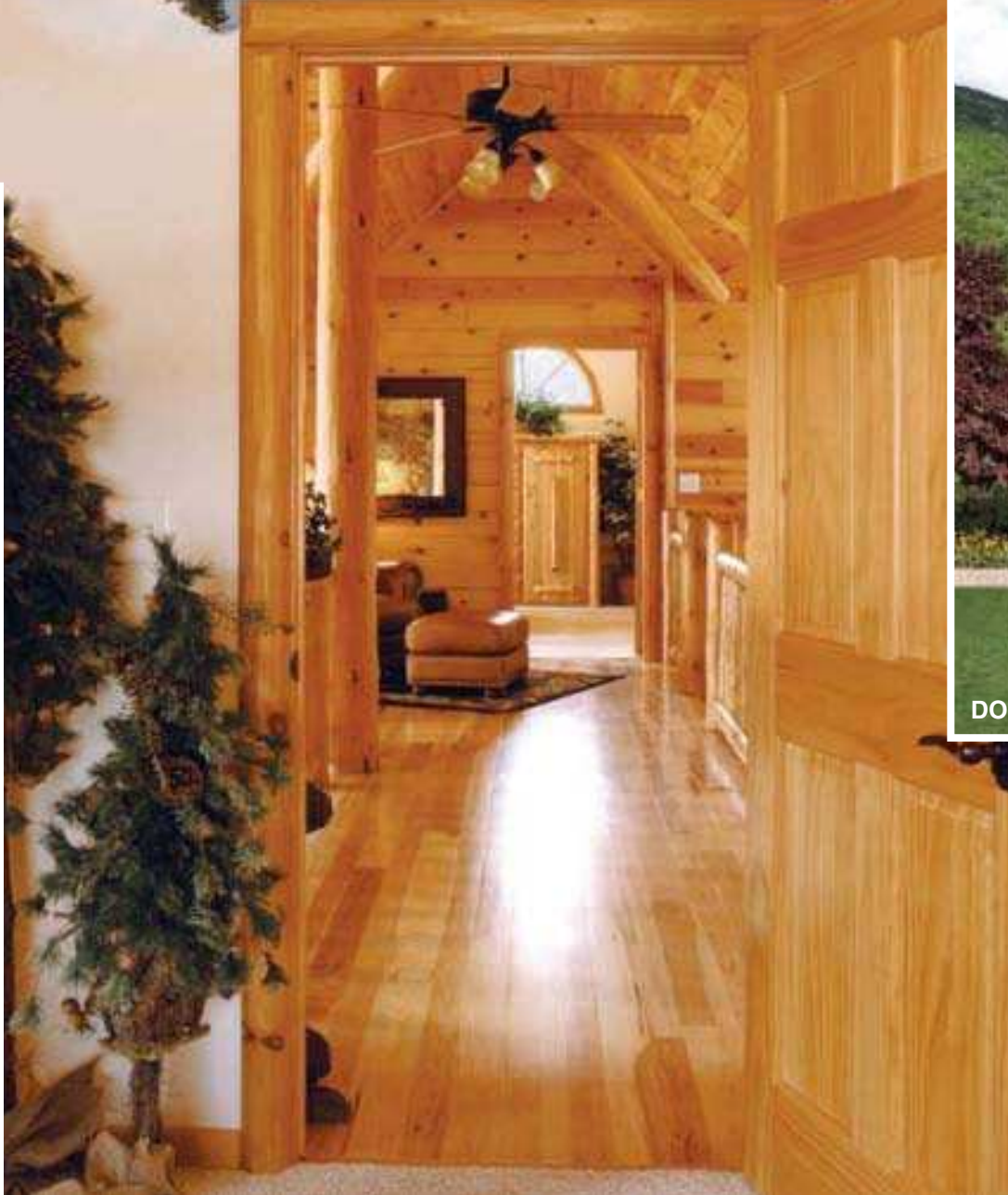
DOUBLE EAGLE DELUXE GRANDE

Grande

has a taller 1st floor!

Most any home we sell, we can design 9' or 10' tall first floor walls.

Loft Level  
Each bedroom in the loft level has a dormer for more light and space. Another set of windows on the gable end is also included in the room, and a roomy closet is also part of the design. Note that in this Double Eagle design, the entry wall features drywall for a hybrid look.





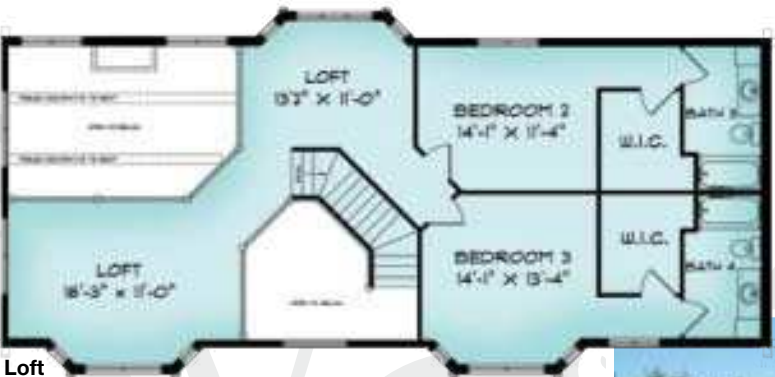
# Shenandoah II

## Exterior

The Shenandoah 2 is one of Golden Eagle's most hybrid-friendly designs. Any part of the two-story exterior can be modified to incorporate shake, stone, or timber accents. Shown below is an optional detached garage.



First Floor



Loft

SHENANDOAH II	
BEDROOMS.....	3
BATHROOMS.....	4
FIRST FLOOR .....	2,044 SQ. FT.
LOFT.....	1,165 SQ. FT.
TOTAL SQ. FT. ....	3,205





## Main Level

Unlike many standard log homes, the main level of the Shenandoah 2 has an intricate pattern of angled walls, hallways, and mix of materials to create a functional and appealing design for families. A set of stairs just inside the entry leads to a pair of sizable lofts overlooking the great room. Behind the stairs and next to the kitchen is an additional family room, which serves as the entry to the very private master suite wing. The laundry area and utility room is just beyond the family room, right at the entrance to the master suite wing.





Master Bedroom

The white mortar look between the logs is called chinking. Chinking can be used on the interior or exterior of your home. If you like the chinking look for some or all of your home, let us know.



Customizable Design

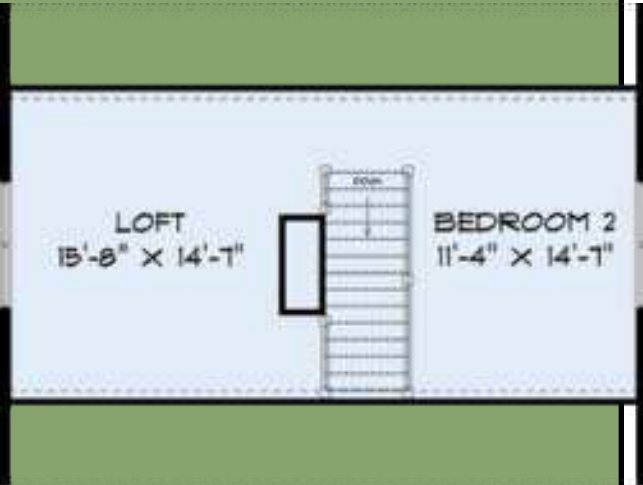
The Shenandoah 2 offers a wealth of options. In this model, the master suite features a gas fireplace next to the soaking tub. The family also converted a lower-level space into a "tiki room," complete with a spa tub, elevated South Pacific bar, and bistro tables and chairs.



ADVENTURER



First Floor



Loft

BEDROOMS.....	2	FIRST FLOOR .....	768 SQ. FT.
BATHROOMS.....	1	LOFT .....	513 SQ. FT.
		TOTAL SQ. FT.....	1,281

AMERICAN EAGLE



First Floor



Loft

BEDROOMS.....	3
BATHROOMS.....	4
FIRST FLOOR .....	1,600 SQ. FT.
LOFT .....	875 SQ. FT.
TOTAL SQ. FT.....	2,475



ASPEN VALLEY



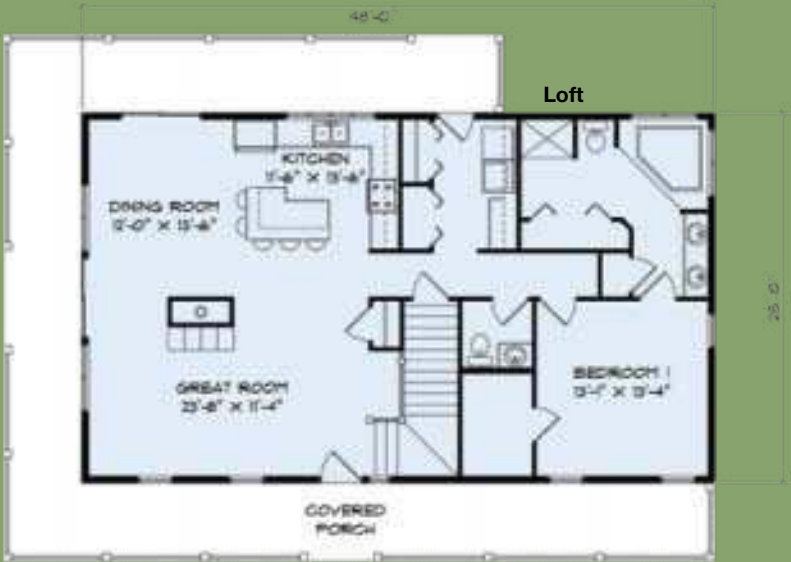
Hybrid Version



First Floor



Log Version



BEDROOMS.....	3
BATHROOMS.....	3
FIRST FLOOR .....	1,344 SQ. FT.
LOFT .....	843 SQ. FT.
TOTAL SQ. FT.....	2,187

BIG TIMBER



First Floor

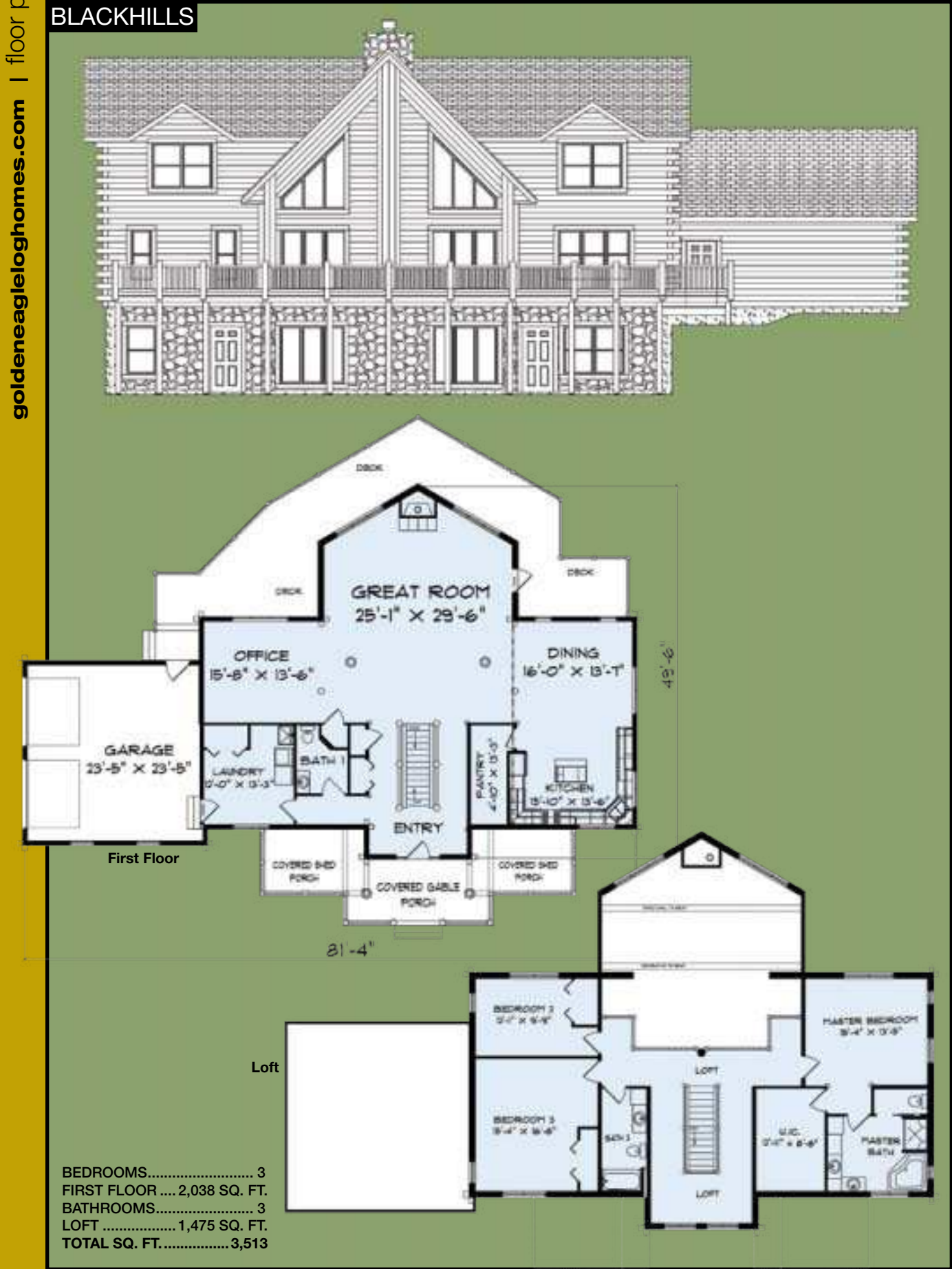


Loft

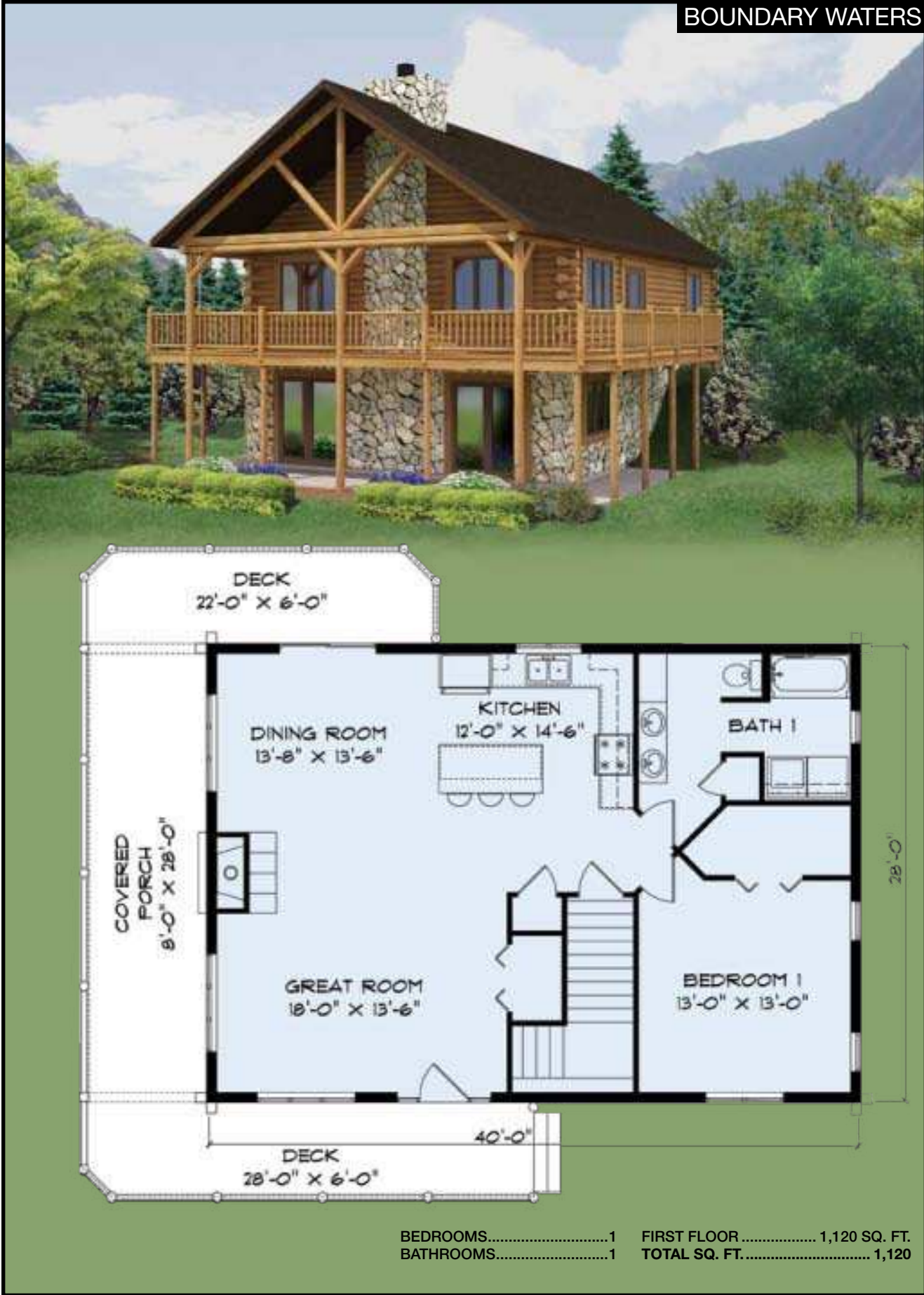
BEDROOMS.....	3
BATHROOMS.....	2
FIRST FLOOR .....	1,348 SQ. FT.
LOFT .....	860 SQ. FT.
TOTAL SQ. FT.....	2,208



BLACKHILLS



BOUNDARY WATERS





BROOKSIDE



BEDROOMS.....	1	FIRST FLOOR .....	1,245 SQ. FT.
BATHROOMS.....	2	LOFT .....	303 SQ. FT.
TOTAL SQ. FT.....		1,548	

CLEARWATER



BEDROOMS.....	3	FIRST FLOOR .....	1,809 SQ. FT.
BATHROOMS.....	3	TOTAL SQ. FT.....	1,809



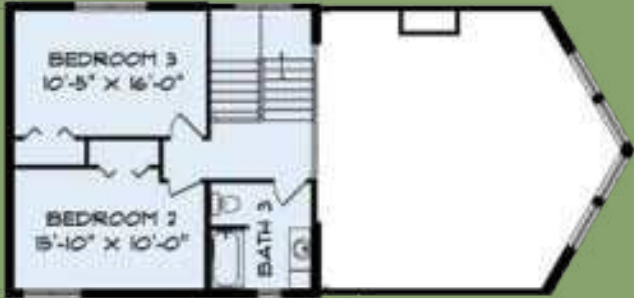
COLORADO II



Hybrid Version



First Floor



Loft



Log Version

BEDROOMS.....	3	FIRST FLOOR .....	1,561 SQ. FT.
BATHROOMS.....	3	LOFT .....	614 SQ. FT.
		TOTAL SQ. FT.....	2,175

COPPER MOUNTAIN



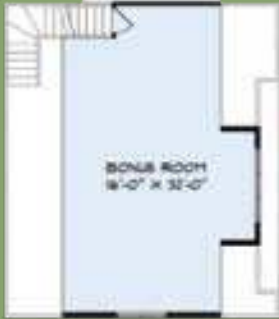
Hybrid Version



First Floor



Loft



BEDROOMS.....	3	FIRST FLOOR .....	2,181 SQ. FT.
BATHROOMS.....	4	LOFT .....	968 SQ. FT.
		TOTAL SQ. FT.....	3,149



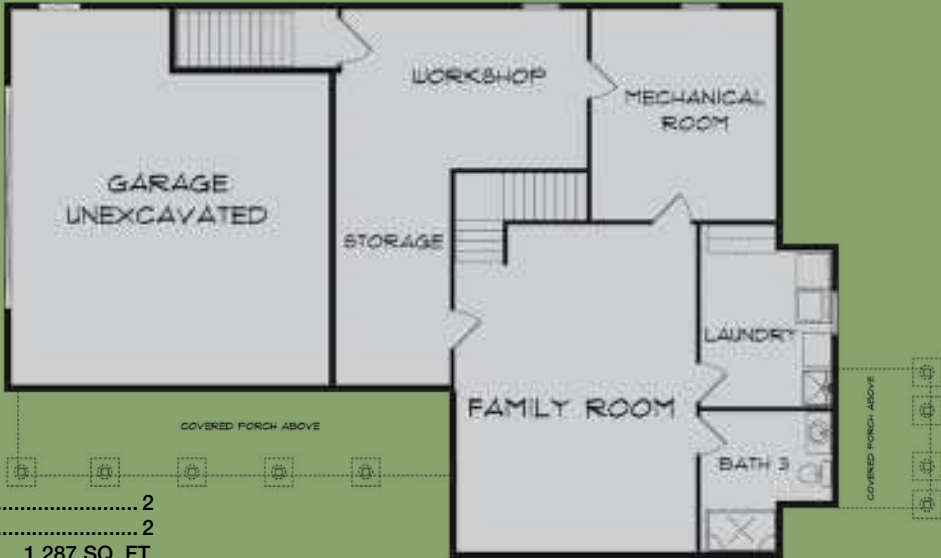
Log Version



COUNTRYSIDE II



First Floor



Optional Lower Level\*

BEDROOMS.....	2
BATHROOMS.....	2
FIRST FLOOR .....	1,287 SQ. FT.
TOTAL SQ. FT.....	1,287
*OPTIONAL LOWER LEVEL .....	1,287 SQ. FT.

EAGLE II DELUXE



First Floor

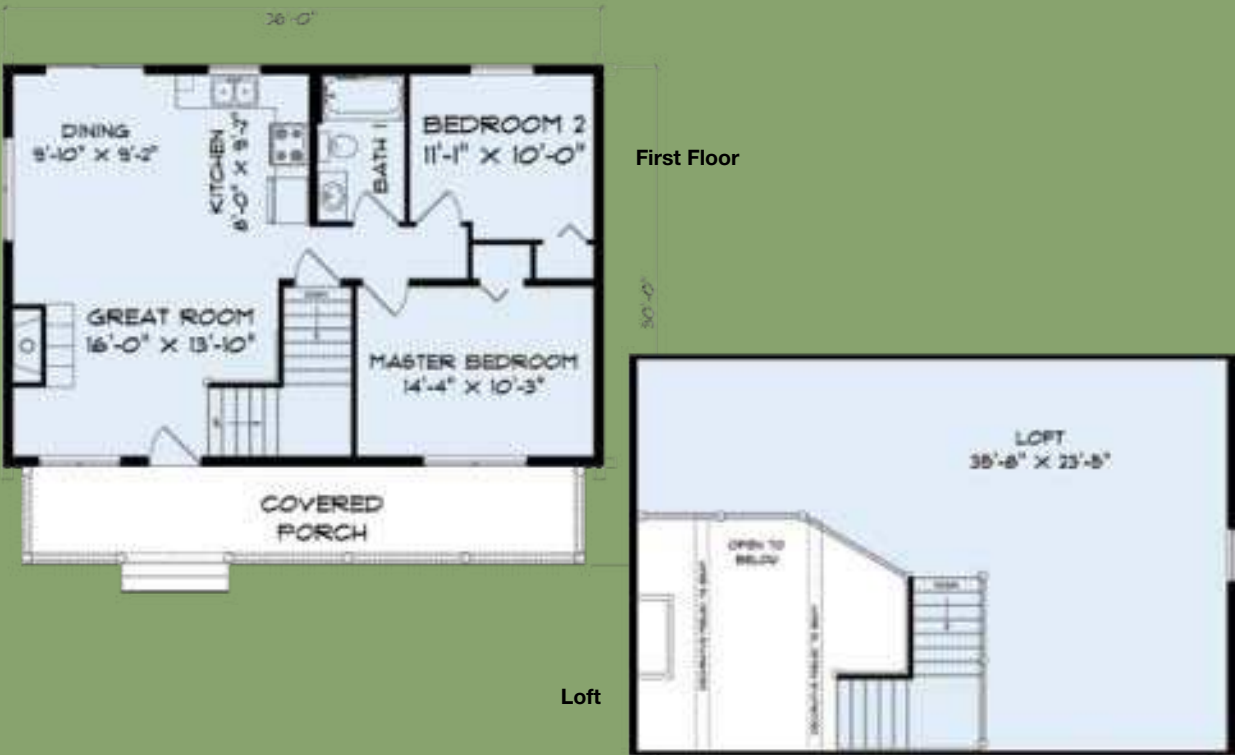


Loft

BEDROOMS.....	2	FIRST FLOOR .....	1,008 SQ. FT.
BATHROOMS.....	1	LOFT .....	576 SQ. FT.
TOTAL SQ. FT.....		TOTAL SQ. FT.....	1,584



EAGLE ISLAND



BEDROOMS.....	2	FIRST FLOOR .....	864 SQ. FT.
BATHROOMS.....	1	LOFT .....	662 SQ. FT.
		TOTAL SQ. FT.....	1,526

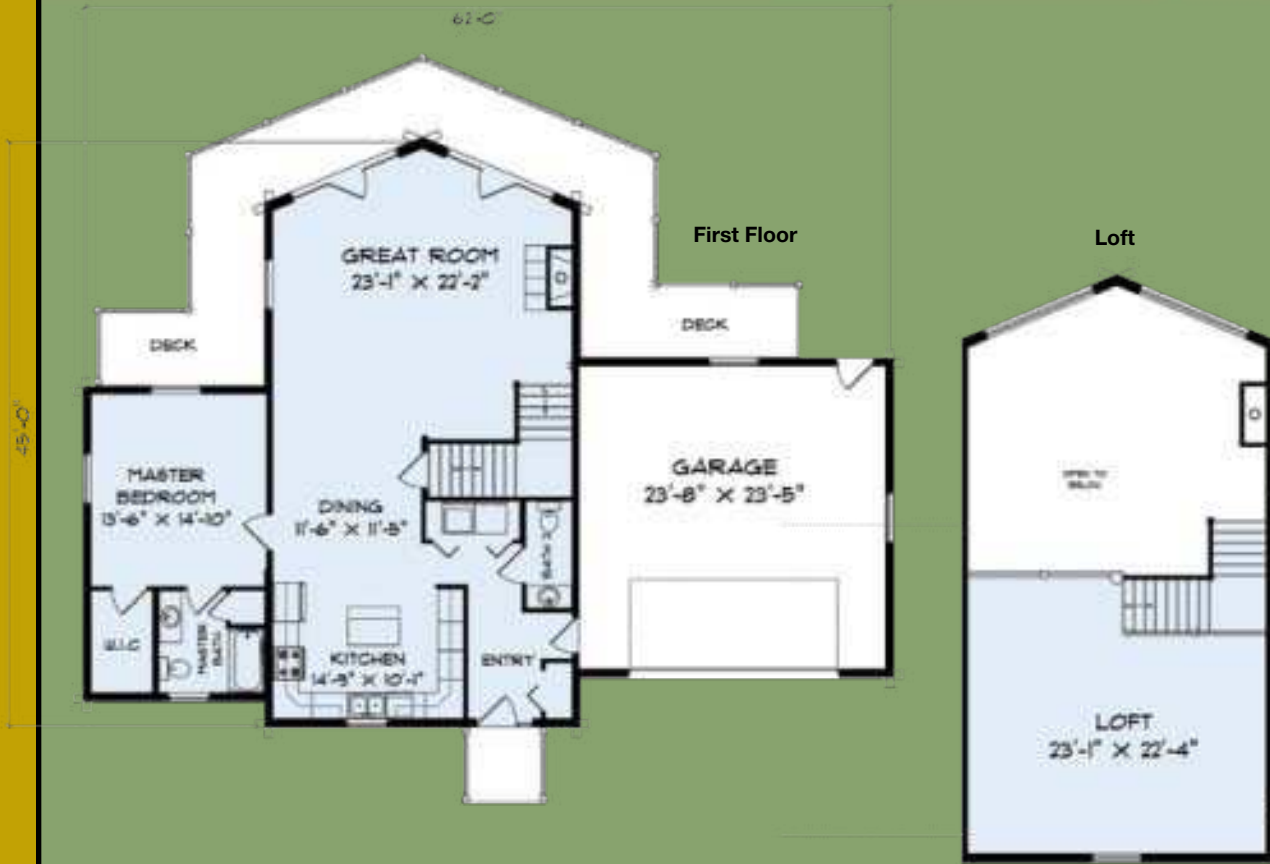
EAGLE POINT II



BEDROOMS.....	3	FIRST FLOOR .....	1,196 SQ. FT.
BATHROOMS.....	2	LOFT .....	720 SQ. FT.
		TOTAL SQ. FT.....	1,916



EAGLE PROW IV



BEDROOMS.....1    FIRST FLOOR ..... 1,379 SQ. FT.  
BATHROOMS.....2    LOFT ..... 553 SQ. FT.  
TOTAL SQ. FT..... 1,932

EMPTY NESTER



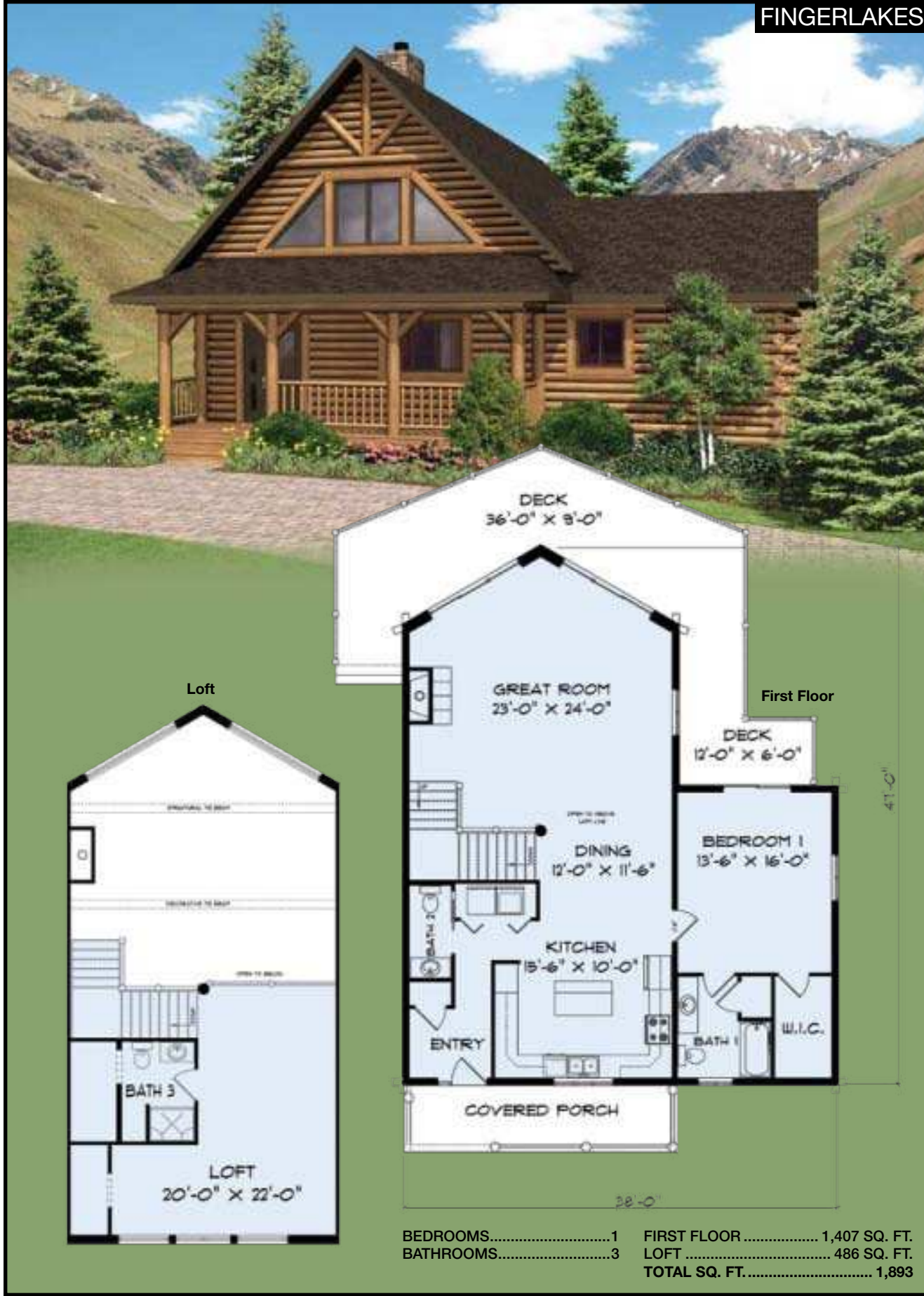
BEDROOMS.....1    FIRST FLOOR ..... 915 SQ. FT.  
BATHROOMS.....1    TOTAL SQ. FT..... 915



EXPEDITION II



FINGERLAKES





GATLINBURG



Hybrid Version

Log Version



First Floor



Loft

BEDROOMS.....	3
BATHROOMS.....	2
FIRST FLOOR .....	1,400 SQ. FT.
LOFT .....	922 SQ. FT.
TOTAL SQ. FT.....	2,322

HERITAGE



First Floor



Loft



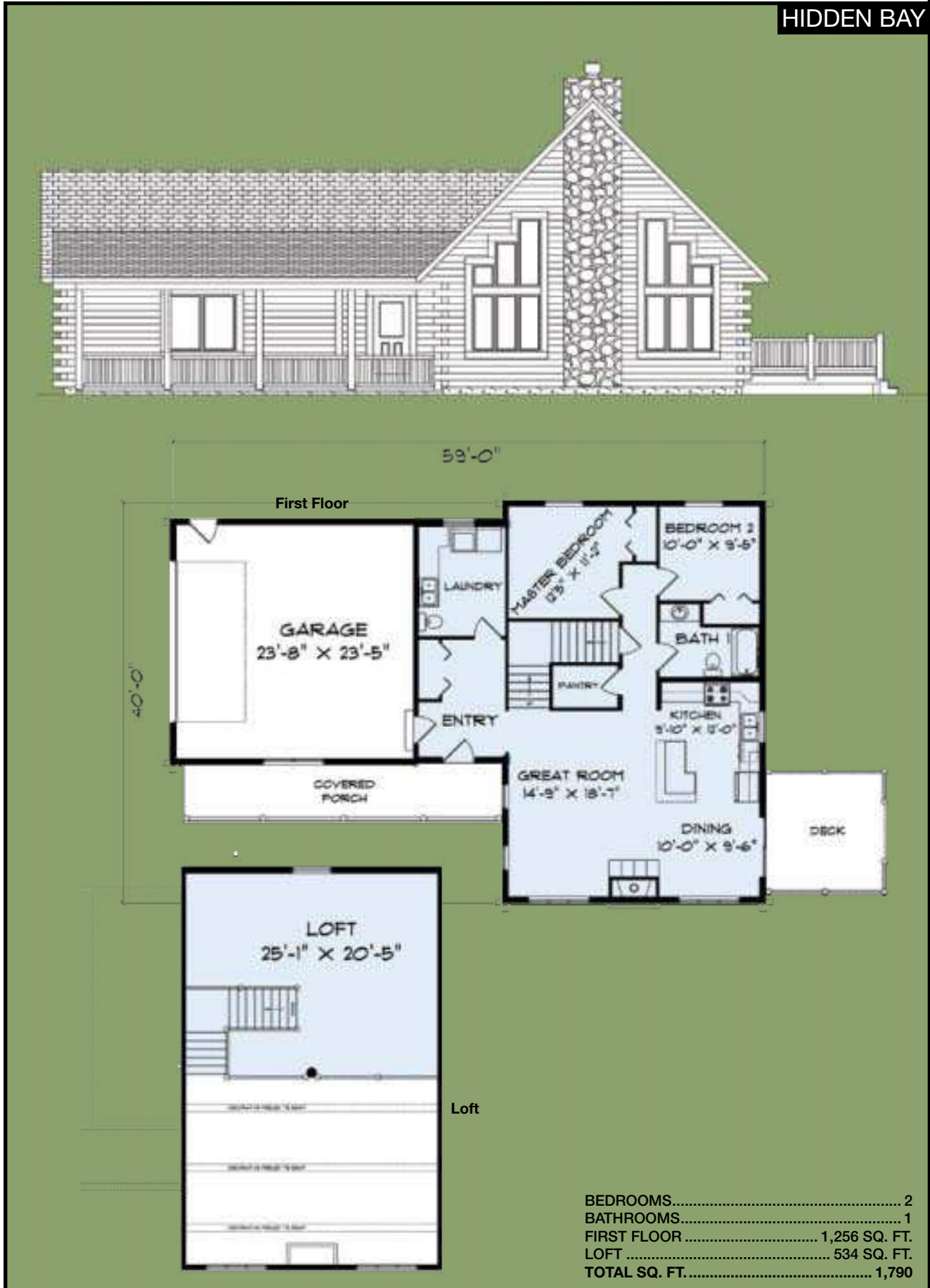
BEDROOMS.....	3	FIRST FLOOR .....	1,716 SQ. FT.
BATHROOMS.....	3	LOFT .....	898 SQ. FT.
		TOTAL SQ. FT.....	2,614



HIAWATHA II



HIDDEN BAY

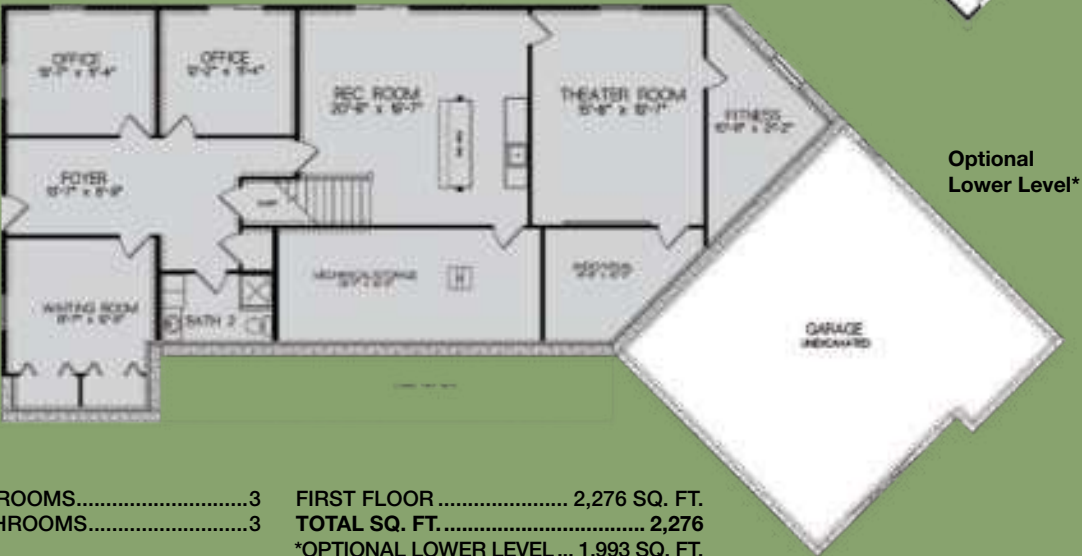




HOME OFFICE



First Floor



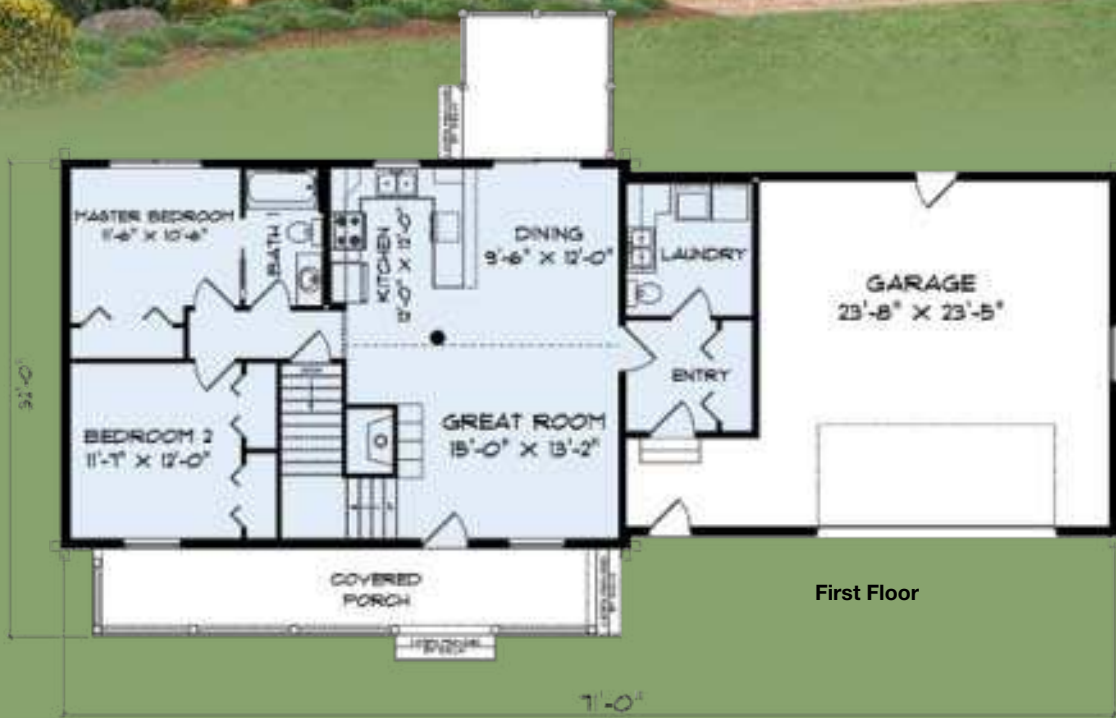
Optional Lower Level\*

BEDROOMS.....3  
BATHROOMS.....3  
FIRST FLOOR ..... 2,276 SQ. FT.  
TOTAL SQ. FT..... 2,276  
\*OPTIONAL LOWER LEVEL ... 1,993 SQ. FT.

HOT SPRINGS



First Floor



Loft

BEDROOMS..... 3  
BATHROOMS..... 2  
FIRST FLOOR ..... 1,147 SQ. FT.  
LOFT ..... 704 SQ. FT.  
TOTAL SQ. FT..... 1,851

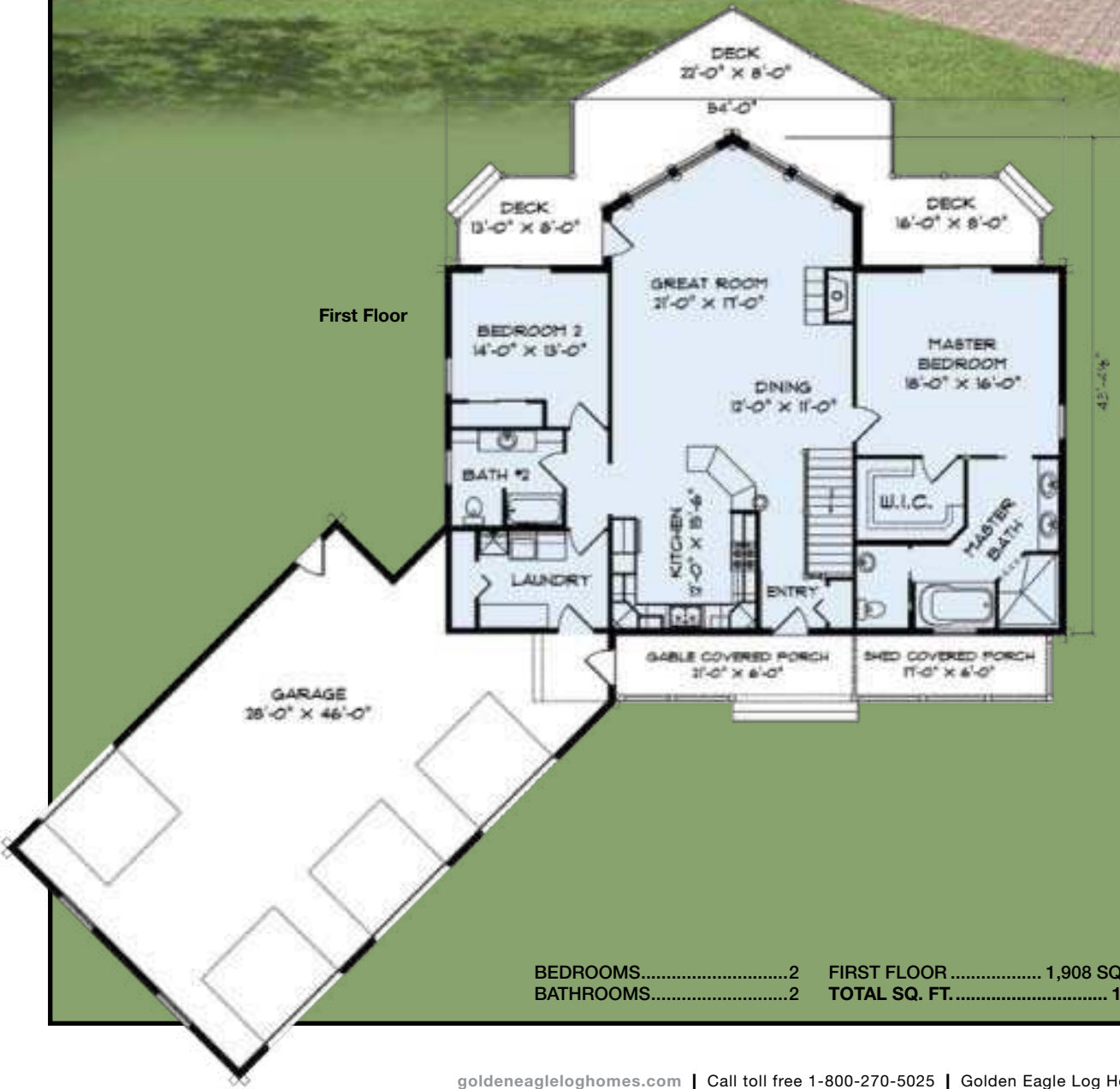


ISLAND VIEW



BEDROOMS.....2 FIRST FLOOR ..... 2,117 SQ. FT.  
BATHROOMS.....2 TOTAL SQ. FT..... 2,117

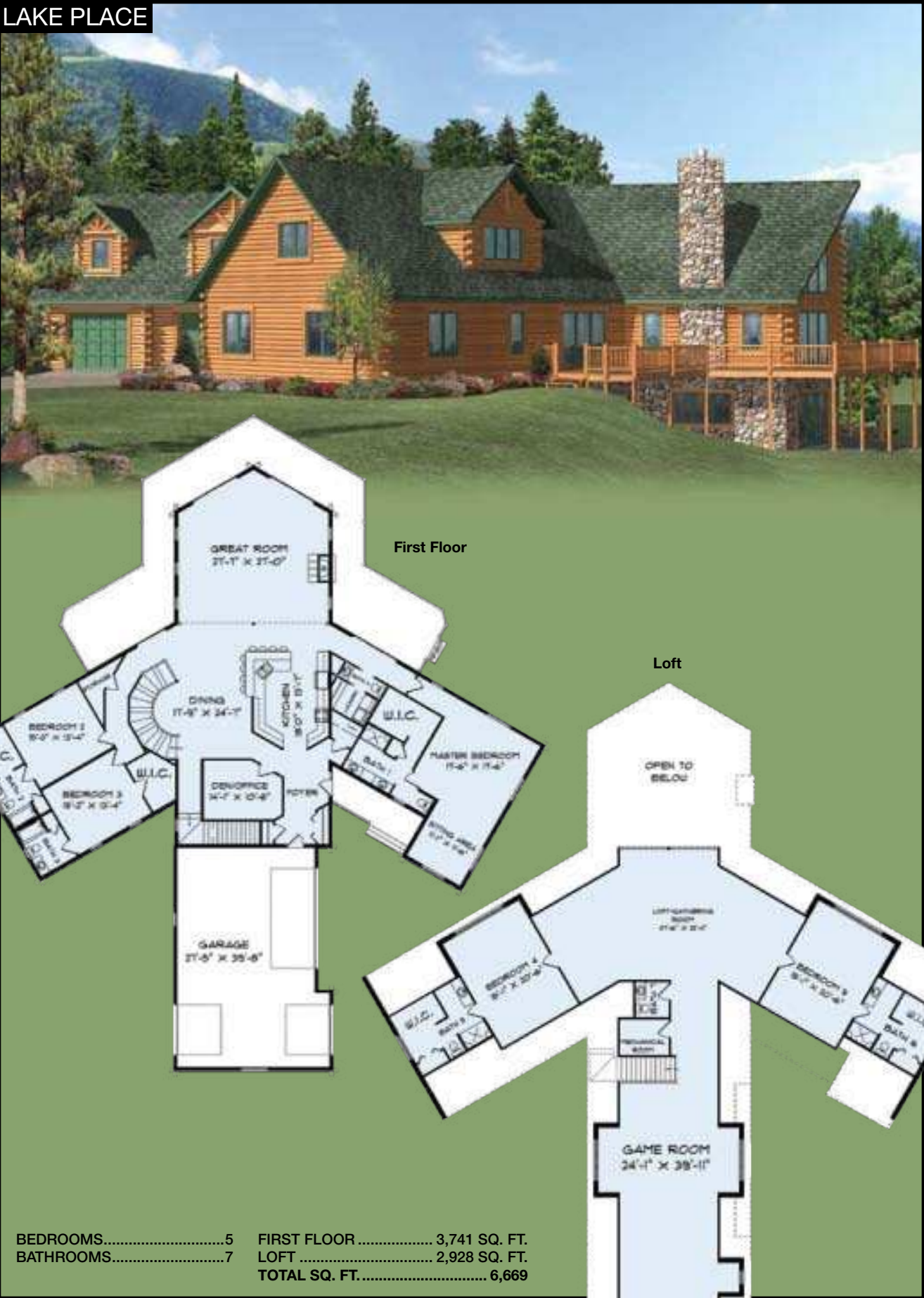
KODIAK



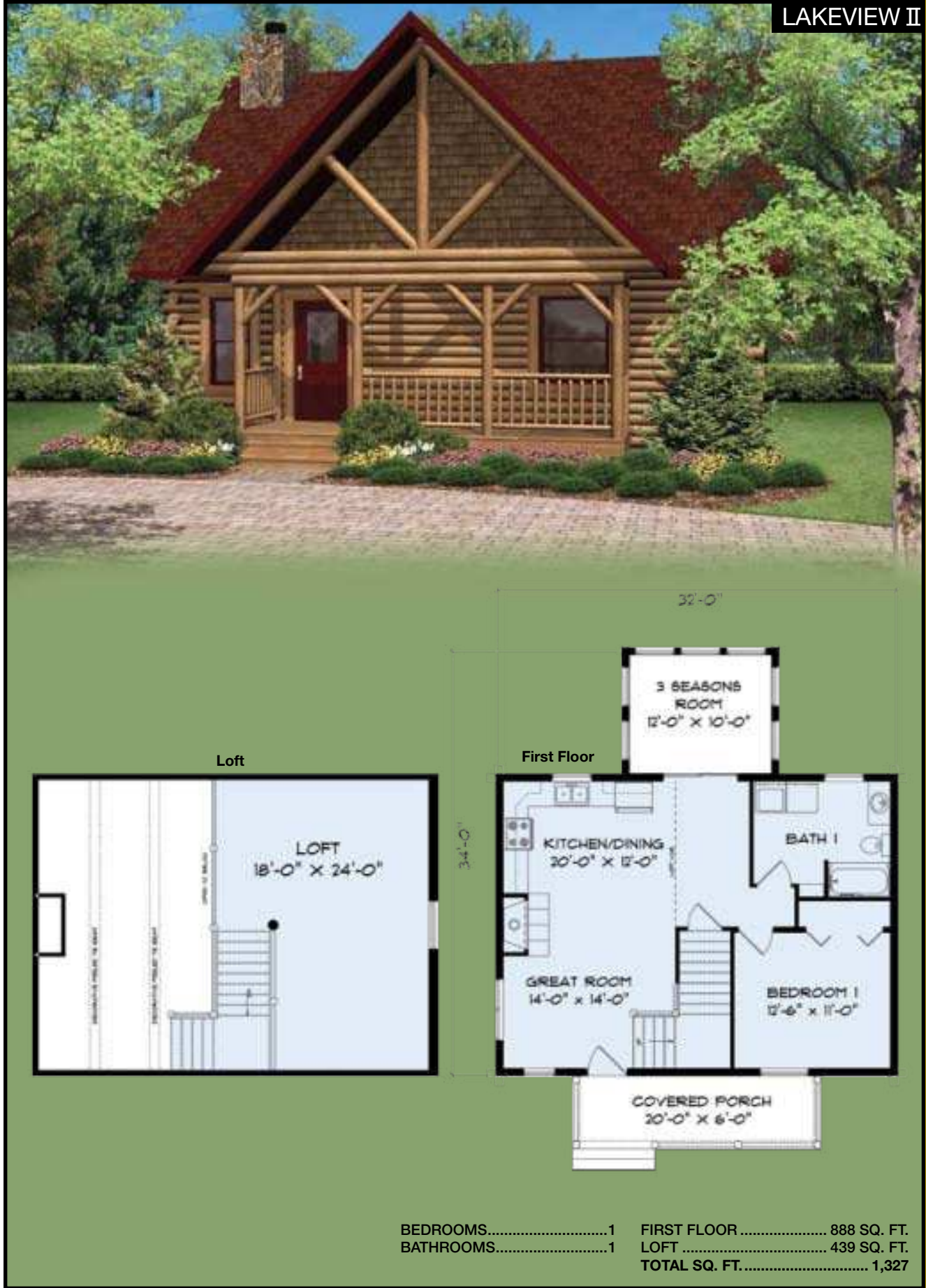
BEDROOMS.....2 FIRST FLOOR ..... 1,908 SQ. FT.  
BATHROOMS.....2 TOTAL SQ. FT..... 1,908



LAKE PLACE



LAKEVIEW II





LODGE II



LOG CABIN II





LOG RANCH



MAGGIE VALLEY



Hybrid Version



Log Version





MINNESOTA II



BEDROOMS.....	3	FIRST FLOOR .....	1,804 SQ. FT.
BATHROOMS.....	4	LOFT .....	1,653 SQ. FT.
		TOTAL SQ. FT.....	3,457

MONTANA



Hybrid Version



Log Version



Loft

BEDROOMS.....	3	FIRST FLOOR .....	1,346 SQ. FT.
BATHROOMS.....	2	LOFT .....	753 SQ. FT.
		TOTAL SQ. FT.....	2,099



First Floor

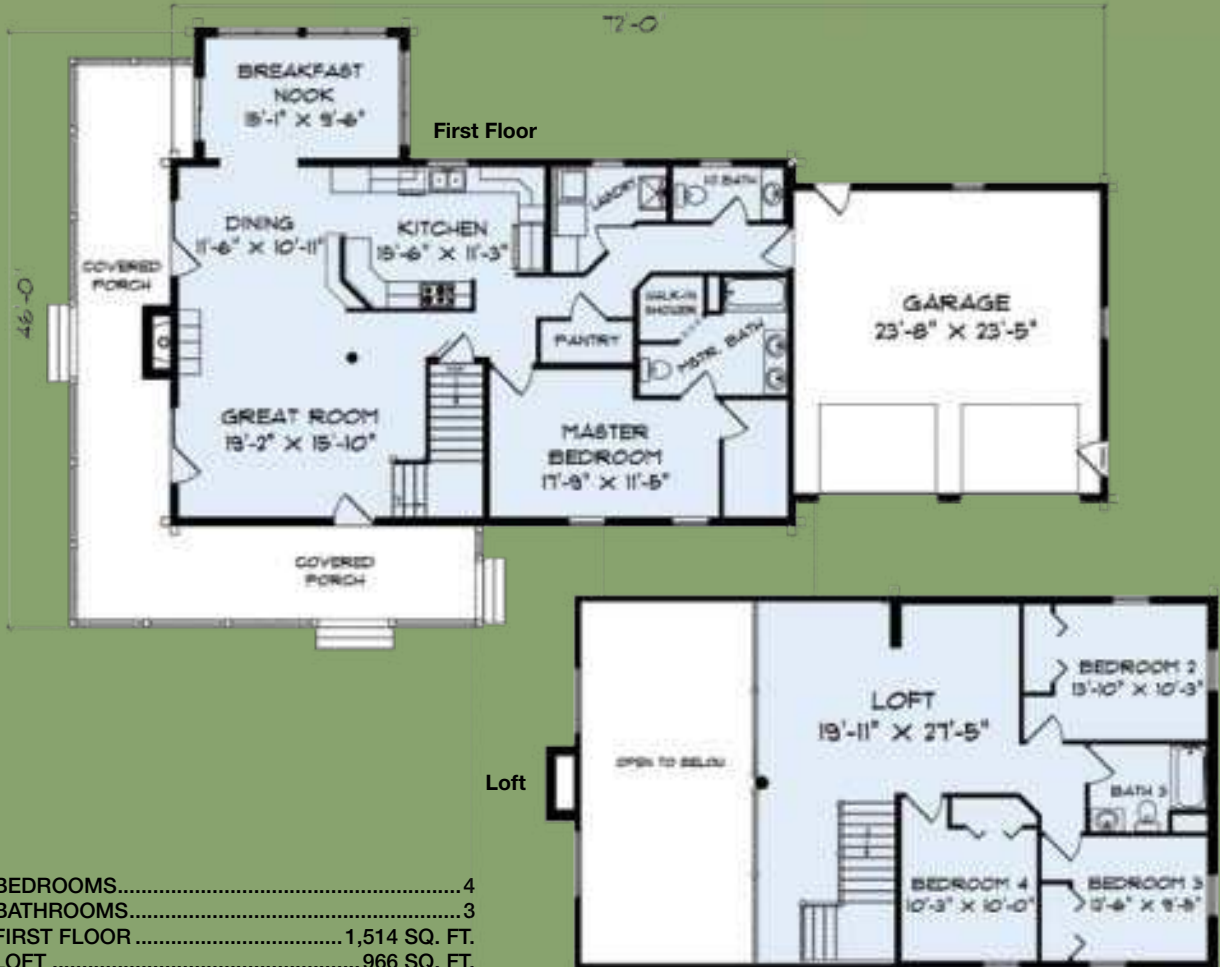


MOUNT RUSHMORE



BEDROOMS.....	3	FIRST FLOOR .....	1,656 SQ. FT.
BATHROOMS.....	2	LOFT .....	846 SQ. FT.
		TOTAL SQ. FT.....	2,502

NEW ENGLAND



BEDROOMS.....	4
BATHROOMS.....	3
FIRST FLOOR .....	1,514 SQ. FT.
LOFT .....	966 SQ. FT.
TOTAL SQ. FT.....	2,480



NORTH CAROLINA



Hybrid Version



Log Version

BEDROOMS.....	2
BATHROOMS.....	2
FIRST FLOOR.....	1,861 SQ. FT.
TOTAL SQ. FT.....	1,861

OAK RIDGE II



BEDROOMS.....	3	FIRST FLOOR.....	1,348 SQ. FT.
BATHROOMS.....	3	LOFT.....	860 SQ. FT.
		TOTAL SQ. FT.....	2,208

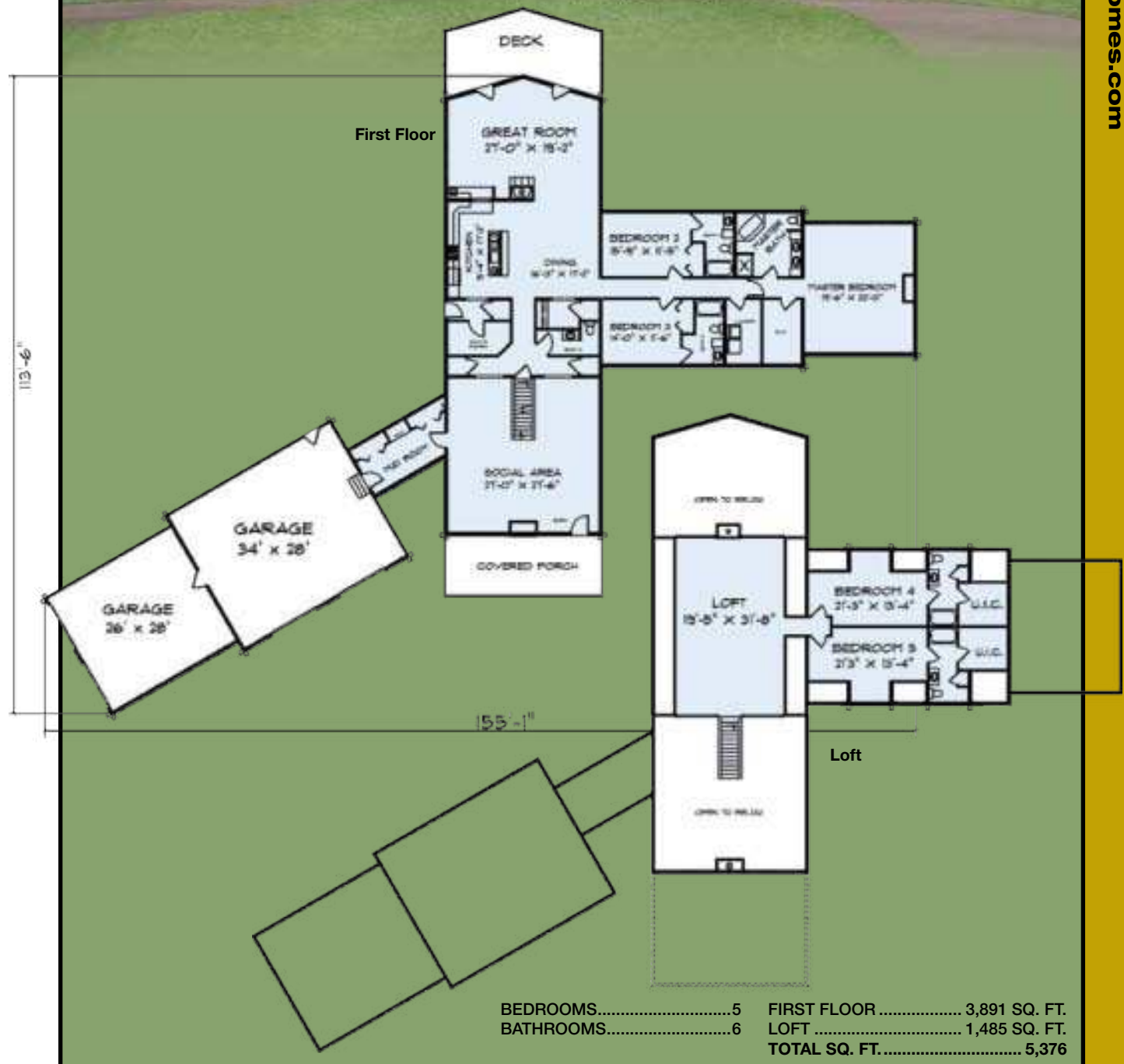


PINEVIEW II



BEDROOMS.....	3	FIRST FLOOR .....	936 SQ. FT.
BATHROOMS.....	2	LOFT .....	714 SQ. FT.
		TOTAL SQ. FT.....	1,650

PINNACLE II



BEDROOMS.....	5	FIRST FLOOR .....	3,891 SQ. FT.
BATHROOMS.....	6	LOFT .....	1,485 SQ. FT.
		TOTAL SQ. FT.....	5,376

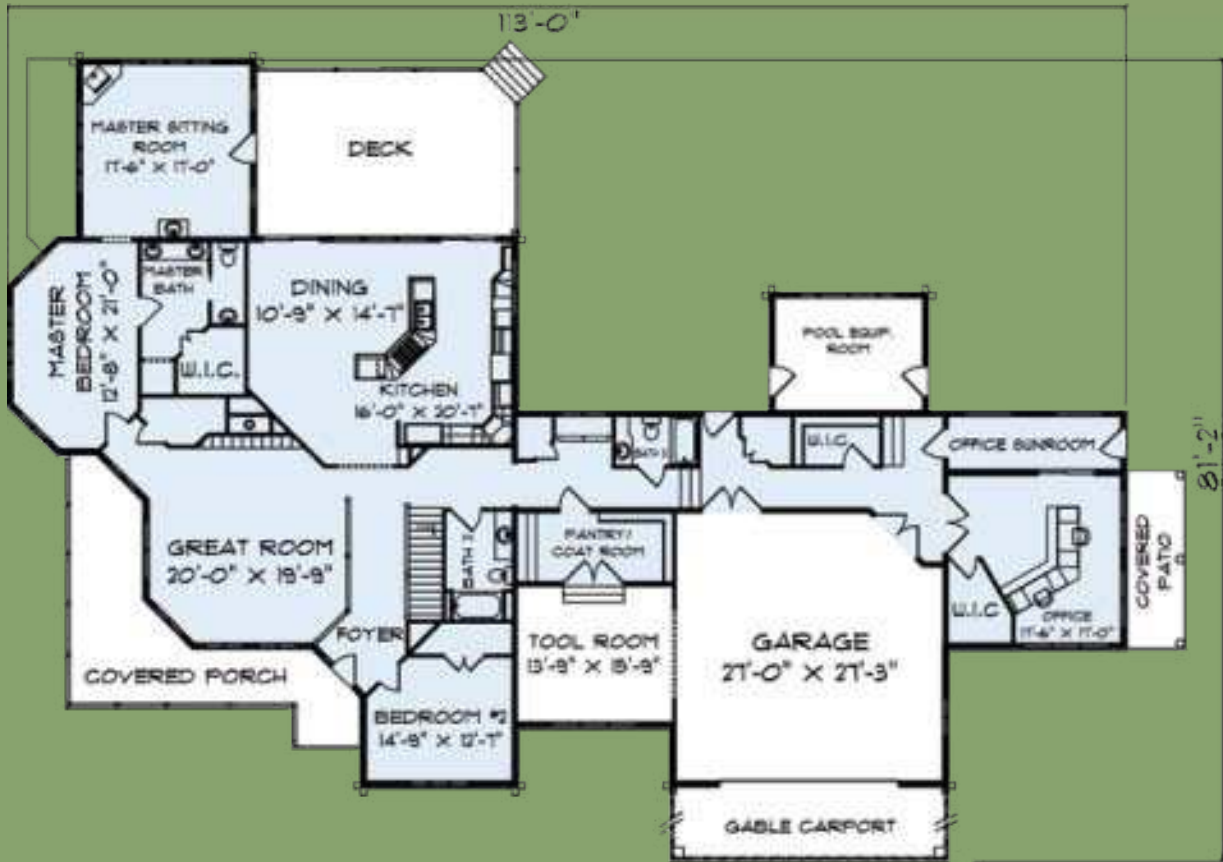


POCONO



BEDROOMS.....	3	FIRST FLOOR .....	1,765 SQ. FT.
BATHROOMS.....	3	LOFT .....	900 SQ. FT.
		TOTAL SQ. FT.....	2,665

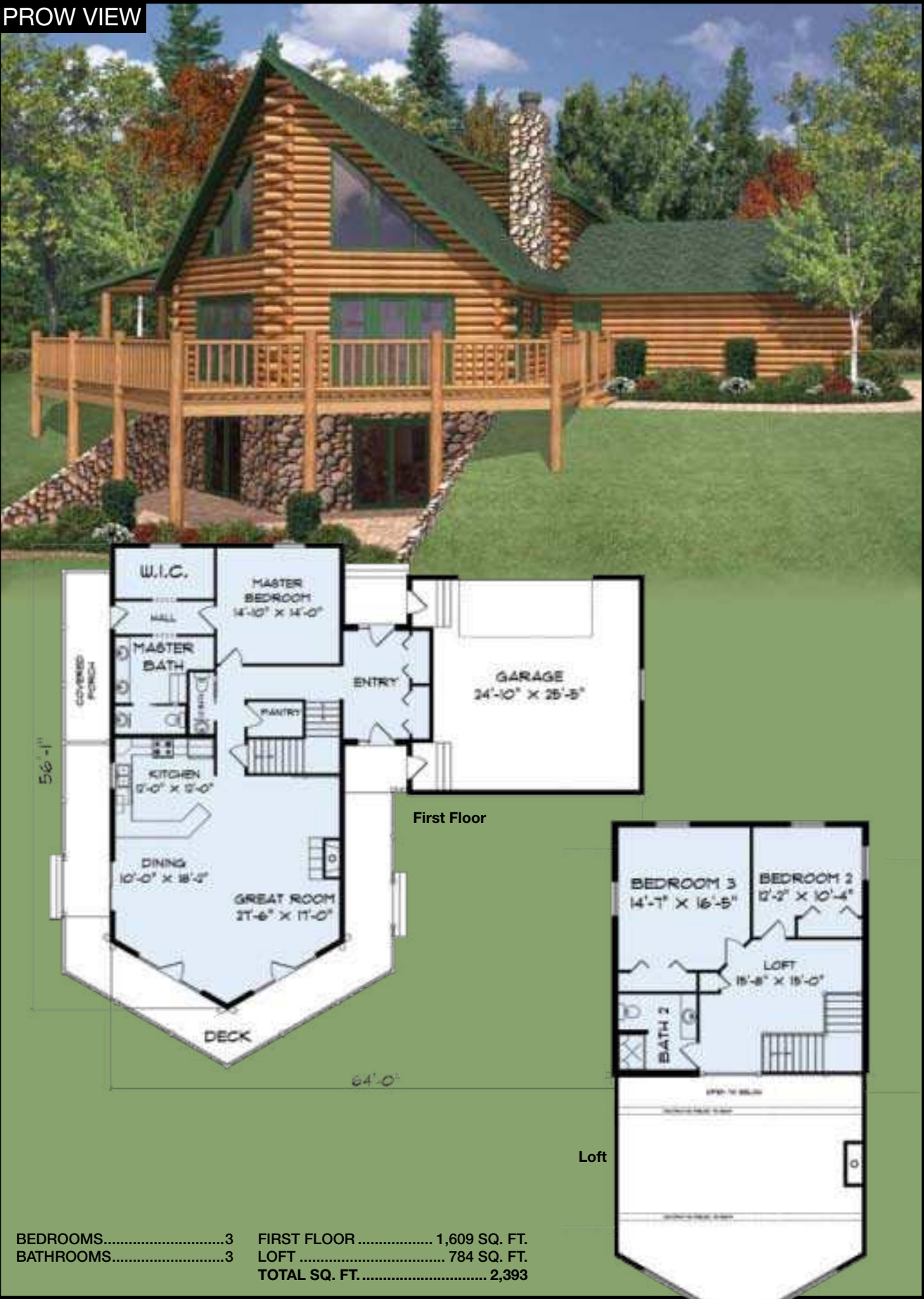
PONDEROSA



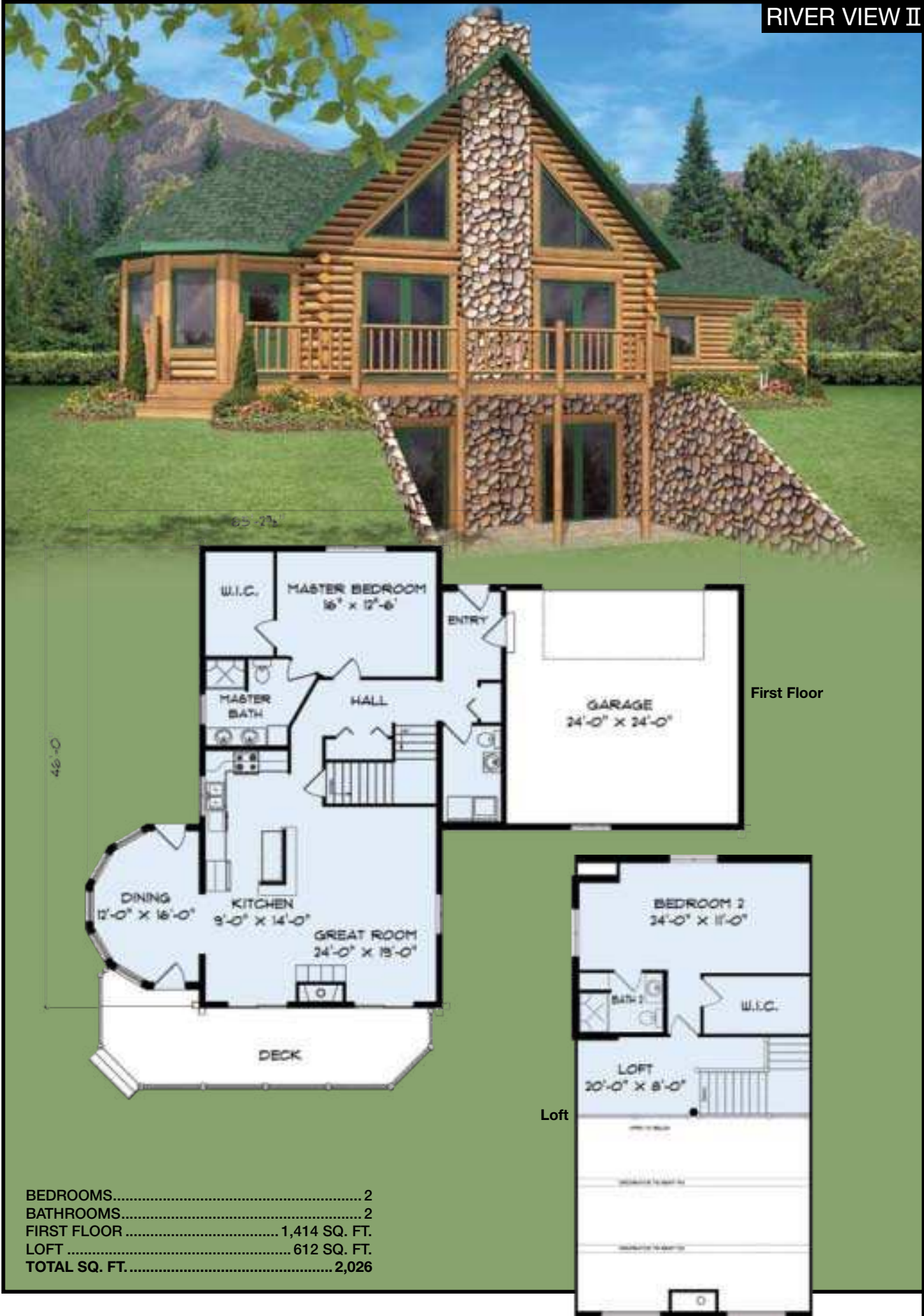
BEDROOMS.....	2	FIRST FLOOR .....	3,440 SQ. FT.
BATHROOMS.....	3	TOTAL SQ. FT.....	3,440



PROW VIEW



RIVER VIEW II

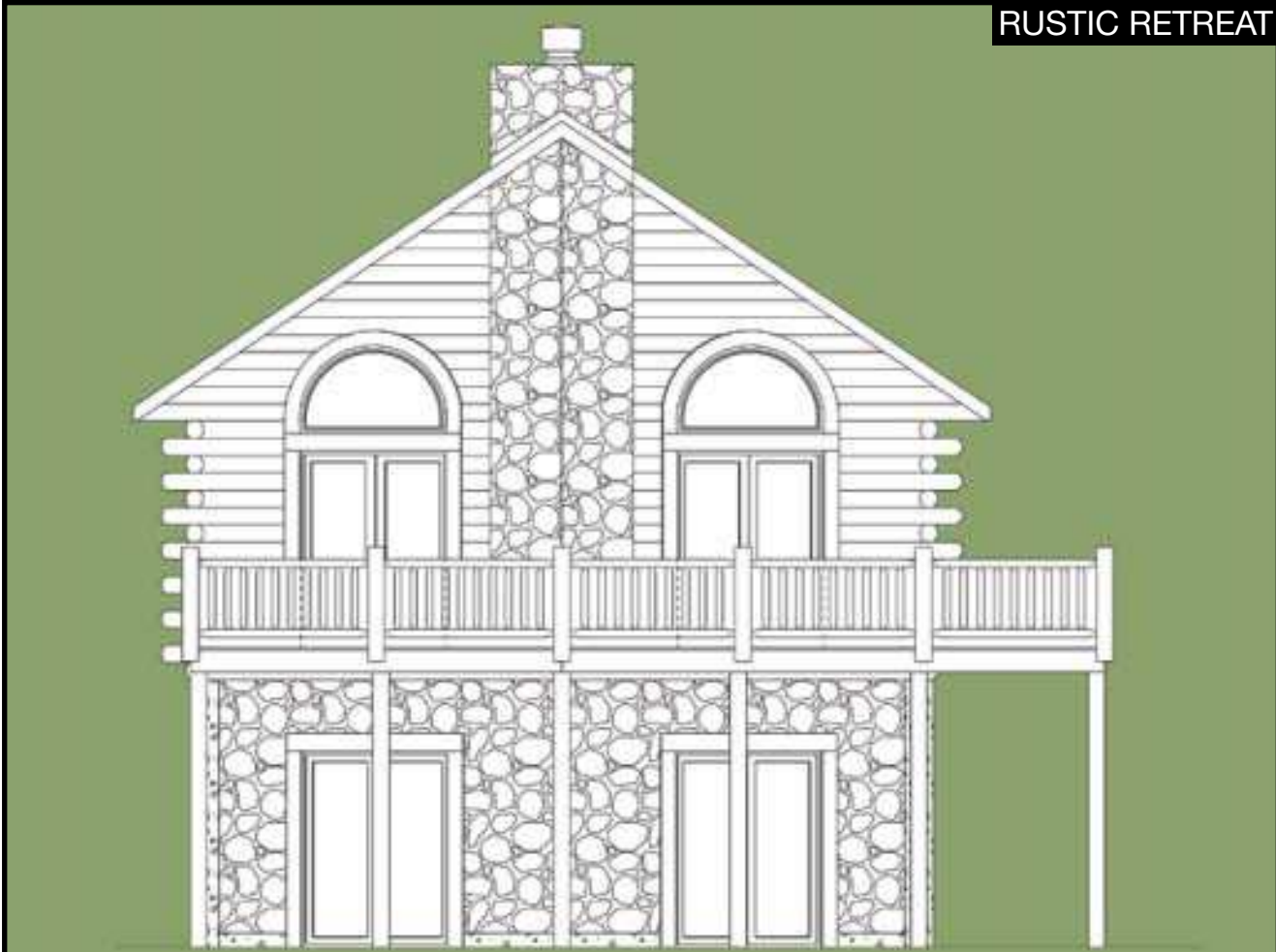




ROCKY MOUNTAIN



RUSTIC RETREAT





SAVANNAH



First Floor



Loft

BEDROOMS.....	3	FIRST FLOOR .....	900 SQ. FT.
BATHROOMS.....	3	LOFT .....	900 SQ. FT.
		TOTAL SQ. FT.....	1,800

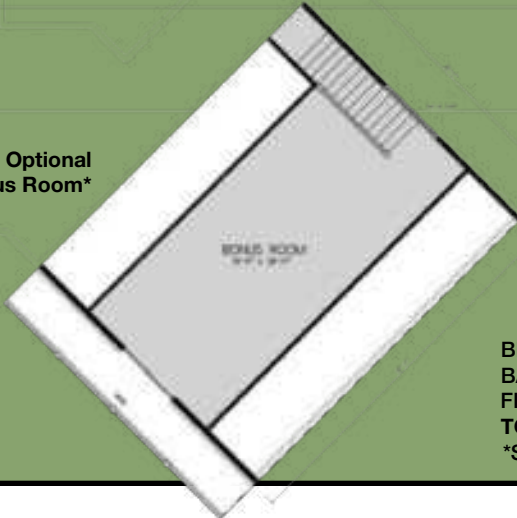
SAWTOOTH



First Floor



Optional Bonus Room\*



BEDROOMS.....	2
BATHROOMS.....	3
FIRST FLOOR .....	2,076 SQ. FT.
TOTAL SQ. FT.....	2,076
*SECOND FLOOR BONUS ROOM OPTIONAL	

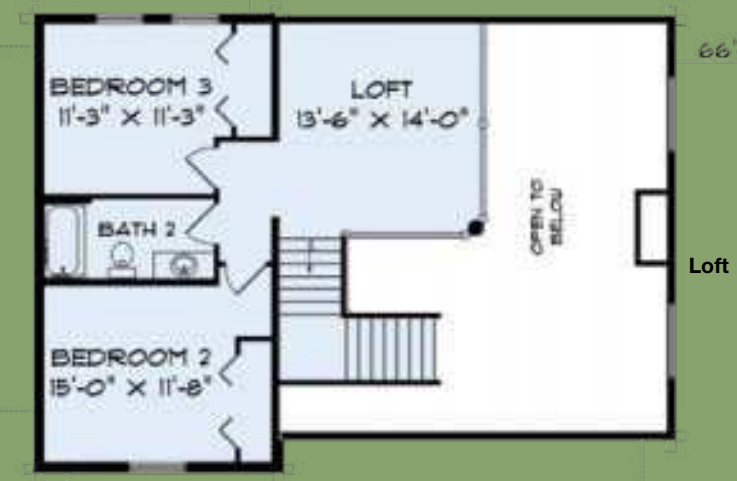


SMOKEY MOUNTAIN



BEDROOMS.....	2	FIRST FLOOR .....	2,378 SQ. FT.
BATHROOMS.....	1	TOTAL SQ. FT.....	2,378

SPRINGFIELD



BEDROOMS.....	3
BATHROOMS.....	2
FIRST FLOOR .....	1,208 SQ. FT.
LOFT .....	748 SQ. FT.
TOTAL SQ. FT.....	1,956



TENNESSEE



BEDROOMS.....	3
BATHROOMS.....	3
FIRST FLOOR .....	1,760 SQ. FT.
LOFT .....	972 SQ. FT.
TOTAL SQ. FT.....	2,732

TIMBERWOLF



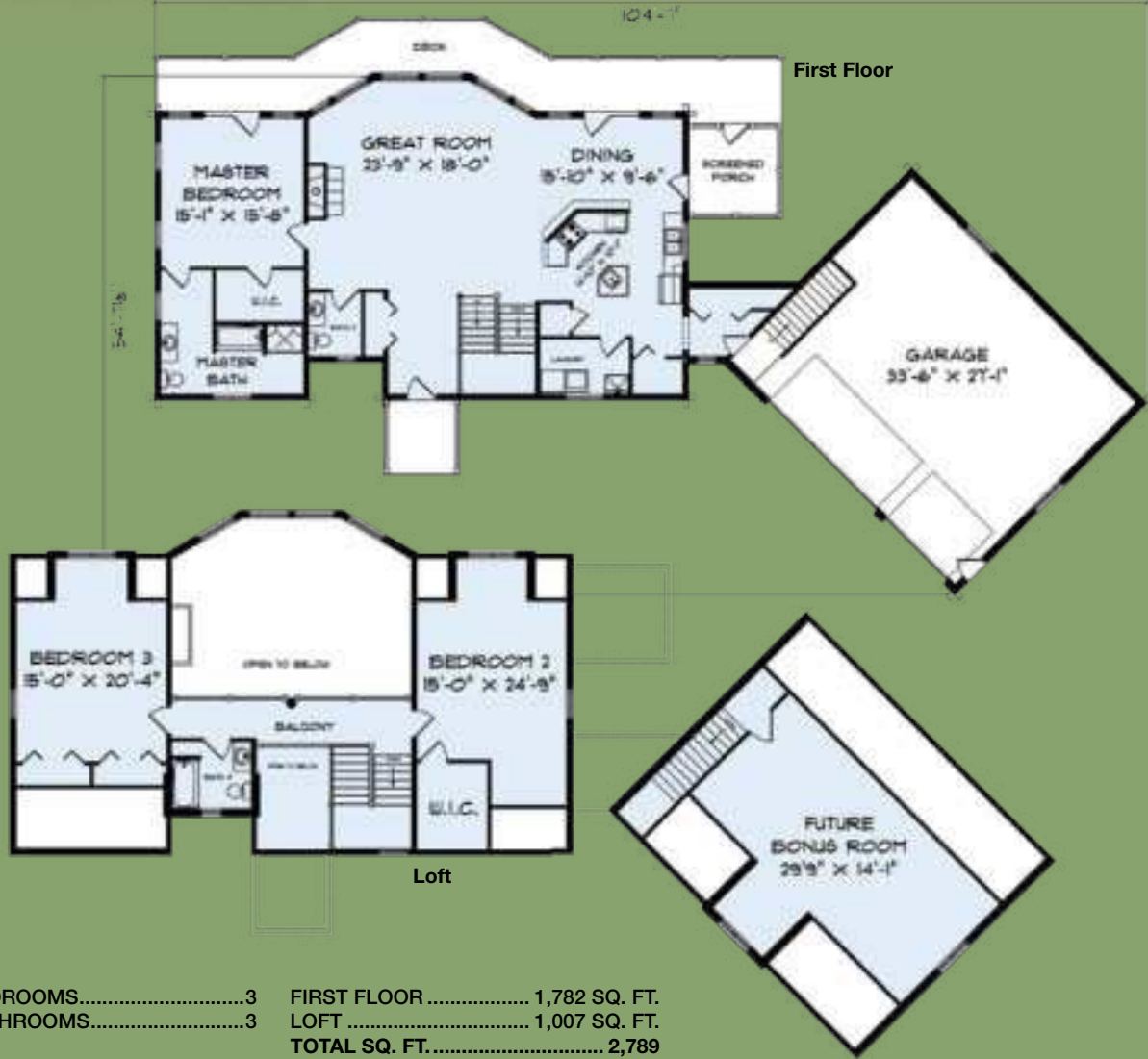
BEDROOMS.....	3	FIRST FLOOR .....	1,560 SQ. FT.
BATHROOMS.....	2	LOFT .....	908 SQ. FT.
		TOTAL SQ. FT.....	2,468



TOMAHAWK

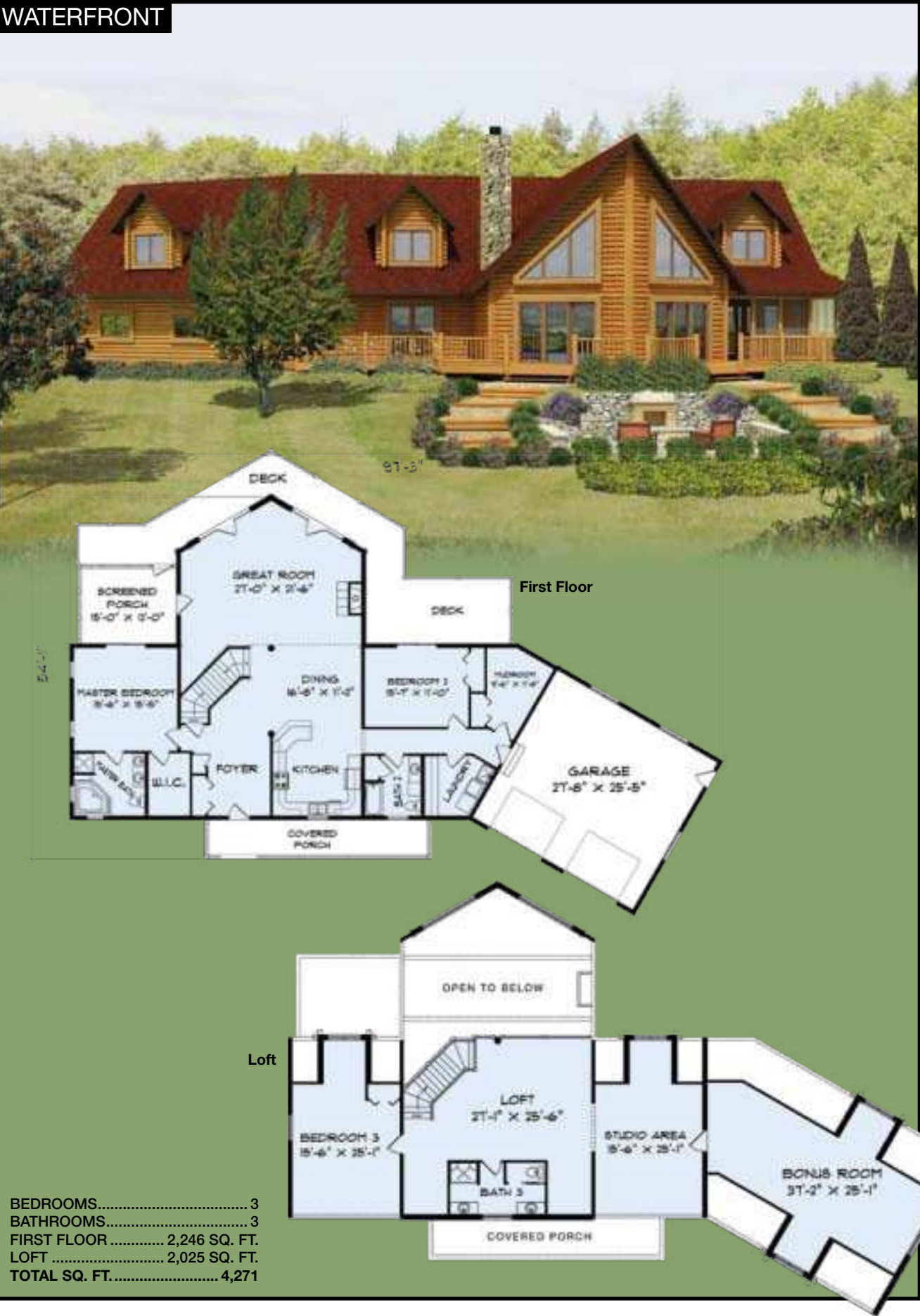


UP NORTH





WATERFRONT

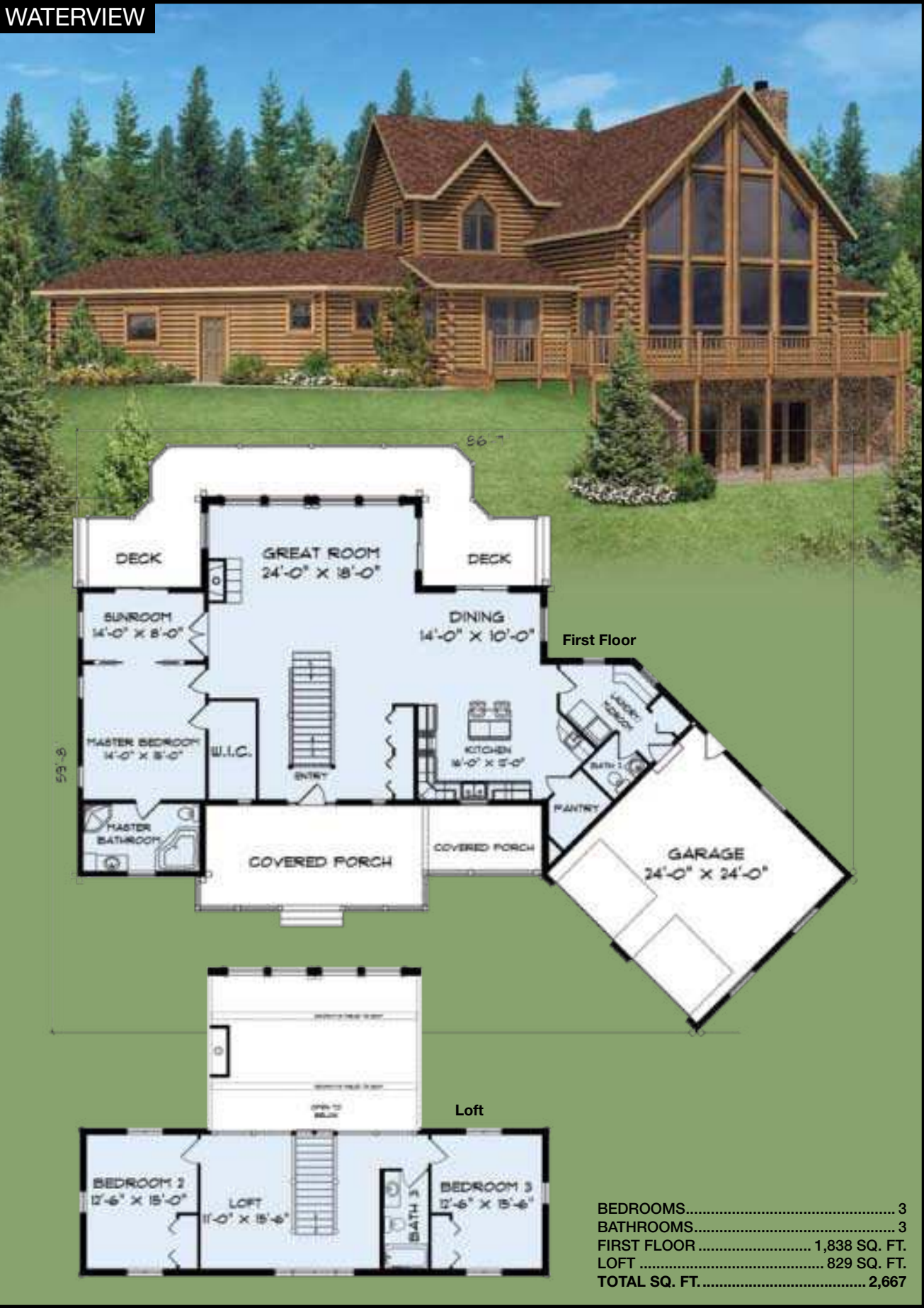


WATERSIDE

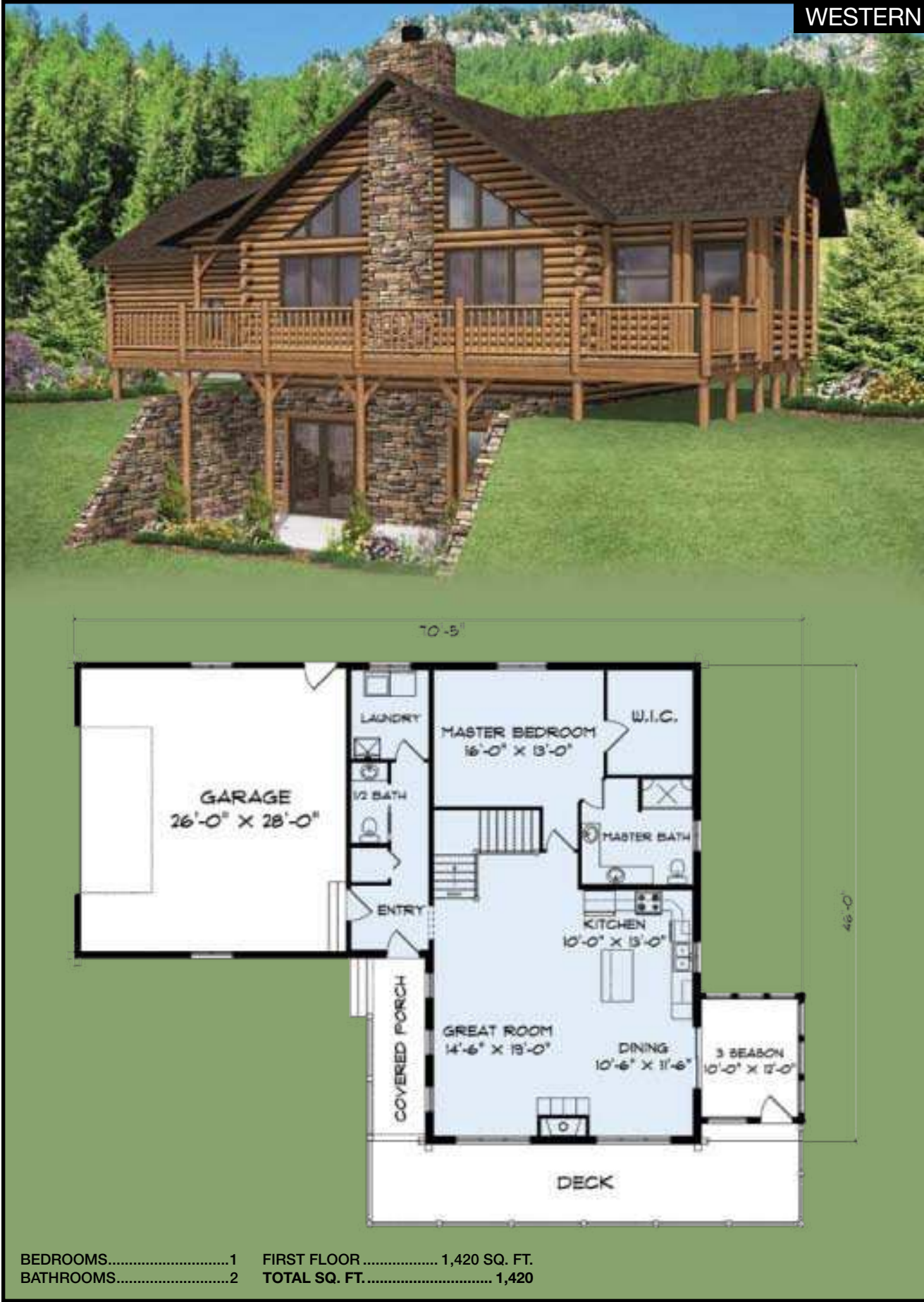




WATERVIEW



WESTERN





WHITE MOUNTAIN



BEDROOMS.....	2
BATHROOMS.....	2
FIRST FLOOR .....	1,519 SQ. FT.
LOFT .....	460 SQ. FT.
TOTAL SQ. FT.....	1,979

WILD RIVER



BEDROOMS.....	3
BATHROOMS.....	3
FIRST FLOOR .....	1,724 SQ. FT.
LOFT .....	1,083 SQ. FT.
TOTAL SQ. FT.....	2,807



WINTERGREEN II



BEDROOMS.....	2	FIRST FLOOR .....	1,342 SQ. FT.
BATHROOMS.....	3	LOFT .....	491 SQ. FT.
		TOTAL SQ. FT.....	1,833

WISCONSIN II



BEDROOMS.....	2	FIRST FLOOR .....	1,512 SQ. FT.
BATHROOMS.....	2	LOFT .....	449 SQ. FT.
		TOTAL SQ. FT.....	1,961



WISCONSIN RAPIDS II

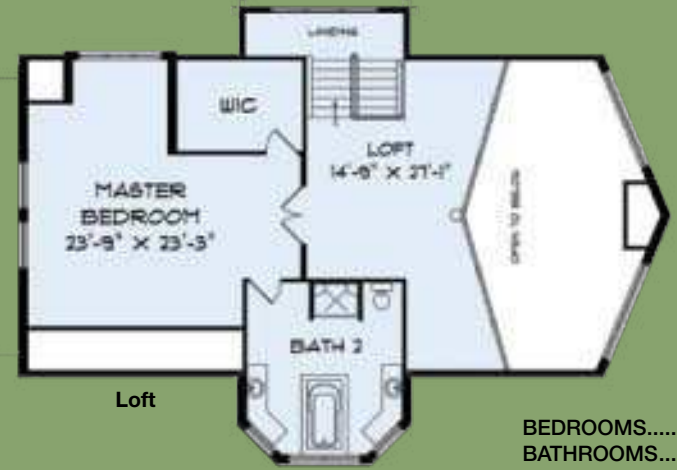


BEDROOMS.....	2	FIRST FLOOR .....	1,260 SQ. FT.
BATHROOMS.....	2	TOTAL SQ. FT.....	1,260

YELLOWSTONE



Hybrid Version



Log Version

BEDROOMS.....	3	FIRST FLOOR .....	1,671 SQ. FT.
BATHROOMS.....	2	LOFT .....	1,184 SQ. FT.
		TOTAL SQ. FT.....	2,855





# Why is buying a *Golden Eagle* complete log home package **best?**

- With a “complete package” all the components will be compatible. Your doors, windows, cabinets, plumbing, vanities, etc. will all be the right size, right color and will coordinate throughout the home.
- Speaking of windows, let's say you buy one house full of windows once in your life, or one kitchen once in your life and then you have trouble with them. Who do you think the manufacturer will help more? The customer who bought them one time and will never buy again, or *Golden Eagle Log Homes* who purchases over 130 houses full of windows or 130 kitchens every year.
- With a complete package you will know what your total costs are.
- Our customers have an almost unlimited range of choices while choosing their package. Visit the [Bertch](#) or [Homecrest Cabinetry](#) websites just to see the kitchen and bathroom cabinetry available to our customers.



Visit our  
**LOG home**  
**design center**





4421 Plover Road,  
Wisconsin Rapids, Wisconsin  
**(800) 270-5025**

**Relax...**  
We've thought of  
**everything**  
and it's **included!**

**Log on to our website**  
**[www.goldeneagleloghomes.com](http://www.goldeneagleloghomes.com)**  
**for more info,** cost examples, home tour dates,  
tips on buying a log home, real estate for sale, photos,  
helpful articles, frequently asked questions, hundreds of  
floor plans, dealer locations, and much much more.

